

Recombinant Human ERBB3 protein, His-Avi-tagged

Cat. No. ERBB3-084H Lot. No. (See product label)

SPECIFICATION

Product Overview	Human ErbB3/Her3 is expressed from mammalian with a His and Avi Tag at the C-terminal. It contains Ser 20 - Thr 643.
Species	Human
Source	HEK293
ProteinLength	It contains Ser 20 - Thr 643.
Description	Her3, also called ErbB3, is a type I membrane glycoprotein that is a member of the ErbB family of tyrosine kinase receptors. Her3 is expressed in keratinocytes, melanocytes, skeletal muscle cells, embryonic myoblasts and Schwann cells. Monomeric Her3 serves as a low affinity receptor for the heregulins (HRG).
Form	Supplied as 0.22um filtered solution in PBS (pH 7.4).
Molecular Mass	The protein has a predicted MW of 71.6kDa. Due to glycosylation, the protein migrates to 90-100 kDa based on Bis-Tris PAGE result.
Endotoxin	Less than 0.05 EU per ug by the LAL method.
Purity	> 95% as determined by Bis-Tris PAGE
Storage	The product should be stored at -70°C. Please do not repeated freeze-thaw cycles.

 Tel: 1-631-559-9269 1-516-512-3133

 Email: info@creative-biomart.com  Fax: 1-631-938-8127

 45-1 Ramsey Road, Shirley, NY 11967, USA

Reconstitution It is recommended that sterile water be added to the vial to prepare a stock solution of 0.2 ug/ul. Centrifuge the vial at 4°C before opening to recover the entire contents.

GENE INFORMATION

Gene Name ERBB3 v-erb-b2 erythroblastic leukemia viral oncogene homolog 3 (avian) [Homo sapiens]

Official Symbol ERBB3

Synonyms ErbB3; ErbB-3; erbB3-S; HER3; HER3c-erbB-3;c-erbB3; EC 2.7.10; EC 2.7.10.1; LCCS2; lethal congenital contracture syndrome 2; MDA-BF-1; MGC88033; p180-ErbB3; p45-sErbB3; p85-sErbB3; Proto-oncogene-like protein c-ErbB-3; receptor tyrosine-protein kinase erbB-3; Tyrosine kinase-type cell surface receptor HER3; v-erb-b2 erythroblastic leukemia viral oncogene homolog 3 (avian)

Gene ID 2065

mRNA Refseq NM_001005915

Protein Refseq NP_001005915

MIM 190151

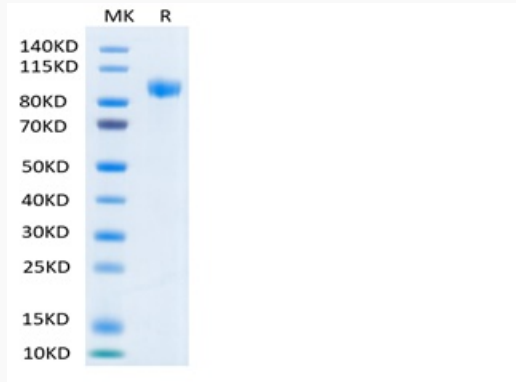
UniProt ID P21860

 Tel: 1-631-559-9269 1-516-512-3133

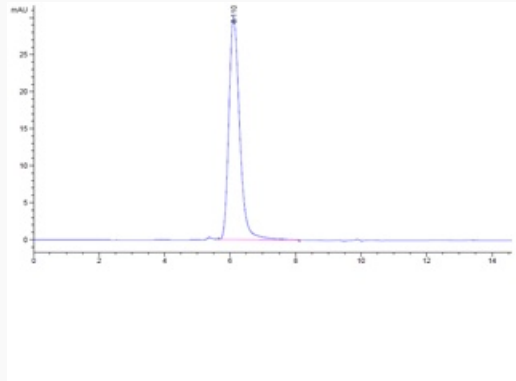
 Email: info@creative-biomart.com  Fax: 1-631-938-8127

 45-1 Ramsey Road, Shirley, NY 11967, USA

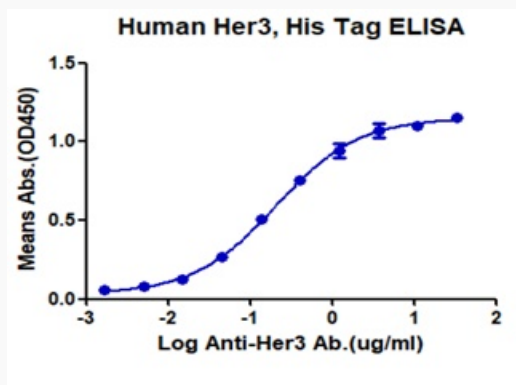
Tris-Bis PAGE



HPLC data



ELISA data



Tel: 1-631-559-9269 1-516-512-3133

Email: info@creative-biomart.com Fax: 1-631-938-8127

45-1 Ramsey Road, Shirley, NY 11967, USA