

# Recombinant Human ERBB3 Protein, Myc/DDK-tagged, C13 and N15-labeled

Cat. No. ERBB3-1765H Lot. No. (See product label)

## SPECIFICATION

### Product Overview

ERBB3 MS Standard C13 and N15-labeled recombinant protein (NP\_001973) with a C-terminal MYC/DDK tag, was expressed in HEK293 cells.

### Species

Human

### Source

HEK293

### Description

This gene encodes a member of the epidermal growth factor receptor (EGFR) family of receptor tyrosine kinases. This membrane-bound protein has a neuregulin binding domain but not an active kinase domain. It therefore can bind this ligand but not convey the signal into the cell through protein phosphorylation. However, it does form heterodimers with other EGF receptor family members which do have kinase activity. Heterodimerization leads to the activation of pathways which lead to cell proliferation or differentiation. Amplification of this gene and/or overexpression of its protein have been reported in numerous cancers, including prostate, bladder, and breast tumors. Alternate transcriptional splice variants encoding different isoforms have been characterized. One isoform lacks the intermembrane region and is secreted outside the cell. This form acts to modulate the activity of the membrane-bound form. Additional splice variants have also been reported, but they have not been thoroughly characterized.

### Molecular Mass

148.1 kDa

 Tel: 1-631-559-9269 1-516-512-3133

 Email: [info@creative-biomart.com](mailto:info@creative-biomart.com)  Fax: 1-631-938-8127

 45-1 Ramsey Road, Shirley, NY 11967, USA

**AA Sequence**

MRANDALQVLGLLFLSLARGSEVGNLSQAVCPGTLNGLSVTGDAENQYQTLTKLYERC  
EVVMGNLEIVLTGHNADLSFLQWIREVTGYVLVAMNEFSTLPLPNLRVVRGTQVYDG  
KFAIFVMLNYNTNSSHALRQLRLTQLTEILSGGVYIEKNDKLCHMDTIDWRDIVRDRD  
AEIVVKDNGRSCPPCHEVCKGRCWGPGESEDCQTLTKTICAPQCNGHCFGNPNQC  
CHDECAGGCSGPQDTCFACRHFNDSGACVPRCPQLVYNKLTFLQLEPNPHTKYQ  
YGGVCVASCPhNFVVDQTSVVRACPPDKMEVDKNGLKMCEPCGGLCPKACEGTG  
SGSRFQTVDSSNIDGFVNCTKILGNLDFLITGLNGDPWHKIPALDPEKLNVFRTVREIT  
GYLNIQSWPPHMHNFSVFSNLTTIGGRSLYNRGFSLLIMKLNVTSLGFRSLKEISAG  
RIYISANRQLCYHHSLNWTKVLRGPTEERLDIKHNRPRRDCVAEGKVCPLCSSGG  
CWGPGPGQCLSCRNYSRGGVCVTHCNFLNGEPREFAHEAECFSCHPECQPMEGT  
ATCNGSGSDTCAQCAHFRDGPFCVSSCPHGVLGAKGPIYKYPDVQNECRPCHENC  
TQGCKGPELQDCLGQTLVLIGKTHLTALTVIAGLVVIFMMLGGTFLYWRGRRIQNK  
RAMRRYLERGESIEPLDPSEKANKVLARIFKETELRKLKVLGSGVFGTVHKGVWIPE  
GESIKIPVCIKVIEDKSGRQSFQAVTDHMLAIGSLDHAHIVRLLGLCPGSSLQLVLTQYL  
PLGSLLDHVRQHRGALGPQLLLNWGVQIAKGMYYLEEHGMVHRNLAARNVLLKSPS  
QVQVADFGVADLLPPDDKQLLYSEAKTPIKWMALESIHFYKGYTHQSDVWSYGVTVW  
ELMTFGAEPYAGLRLAEVPDLLEKGERLAQPQICTIDVYVMVMKVCWMIDENIRPTFK  
ELANEFTRMARDPPRYLVIKRESGPGIAPGPEPHGLTNKKLEEVELEPELDLDDLEA  
EEDNLATTTLSALSPLVGTLNRPGRSQSLLSPSSGYMPMNQGNLGESECSQESAVS  
GSSERCPRPVSLHPMPRGCLASESSEGHVGTGSEAEKQKSMCRSRSRSRSPRPR  
GDSAYHSQRHSLTPVTPLSPPGLEEEDVNGYVMPDTHLKGTPSSREGTLSSVGLS  
SVLGTEEEDEDEEYEMNRRRRHSPHPPRPSSLEELGYEYMDVGSLSASLGST  
QSCPLHPVPIMPTAGTTPDEDYEMNRQRDGGGPGDYAAMGACPAEQGYEEM  
RAFQGPQGHQAPHVHYARLKTLSLEATDSAFDNPDYWHSRLFPKANAQRTRTRP  
LEQKLISEEDLAANDILDYKDDDDKV

**Purity**

&gt; 80% as determined by SDS-PAGE and Coomassie blue staining

**Stability**

Stable for 3 months from receipt of products under proper storage and handling conditions.

 Tel: 1-631-559-9269 1-516-512-3133 Email: [info@creative-biomart.com](mailto:info@creative-biomart.com)  Fax: 1-631-938-8127 45-1 Ramsey Road, Shirley, NY 11967, USA

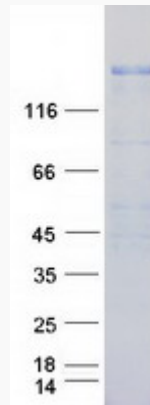
<b>Storage</b>	Store at -80 centigrade. Avoid repeated freeze-thaw cycles.
<b>Concentration</b>	50 µg/mL as determined by BCA
<b>Storage Buffer</b>	100 mM glycine, 25 mM Tris-HCl, pH 7.3.
<b>GENE INFORMATION</b>	
<b>Gene Name</b>	ERBB3 erb-b2 receptor tyrosine kinase 3 [ Homo sapiens (human) ]
<b>Official Symbol</b>	ERBB3
<b>Synonyms</b>	ERBB3; v-erb-b2 erythroblastic leukemia viral oncogene homolog 3 (avian); LCCS2, lethal congenital contracture syndrome 2; receptor tyrosine-protein kinase erbB-3; HER3; proto-oncogene-like protein c-ErbB-3; tyrosine kinase-type cell surface receptor HER3; LCCS2; ErbB-3; c-erbB3; erbB3-S; MDA-BF-1; c-erbB-3; p180-ErbB3; p45-sErbB3; p85-sErbB3; MGC88033;
<b>Gene ID</b>	2065
<b>mRNA Refseq</b>	NM_001982
<b>Protein Refseq</b>	NP_001973
<b>MIM</b>	190151
<b>UniProt ID</b>	P21860

 Tel: 1-631-559-9269 1-516-512-3133

 Email: [info@creative-biomart.com](mailto:info@creative-biomart.com)  Fax: 1-631-938-8127

 45-1 Ramsey Road, Shirley, NY 11967, USA

**SDS-PAGE**



 Tel: 1-631-559-9269 1-516-512-3133

 Email: [info@creative-biomart.com](mailto:info@creative-biomart.com)  Fax: 1-631-938-8127

 45-1 Ramsey Road, Shirley, NY 11967, USA