

Recombinant Human ERBB3 Protein(Ser20-Thr643), His-Avi-tagged, FITC-Labeled

Cat. No. ERBB3-207H Lot. No. (See product label)

SPECIFICATION

Product Overview	FITC-Labeled Recombinant Human ERBB3 Protein(Ser20-Thr643)(P21860), fused with C-terminal His and Avi tag, was expressed in HEK293.
Species	Human
Source	HEK293
ProteinLength	Ser20-Thr643
Conjugation/Label	FITC
Form	Lyophilized from 0.22 µm filtered solution in PBS, pH 7.4. Normally 8% trehalose is added as protectant before lyophilization.
Bio-activity	Immobilized FITC-Labeled Human Her3, His Tag at 5µg/ml (100µl/well) on the plate. Dose response curve for Human NRG1 Beta 1, hFc Tag with the EC50 of 23.6ng/ml determined by ELISA.
Molecular Mass	The protein has a predicted MW of 71.6 kDa. Due to glycosylation, the protein migrates to 72-75 kDa based on Tris-Bis PAGE result.
Endotoxin	Less than 1EU per µg by the LAL method.
Purity	> 95% as determined by Tris-Bis PAGE.

 Tel: 1-631-559-9269 1-516-512-3133

 Email: info@creative-biomart.com  Fax: 1-631-938-8127

 45-1 Ramsey Road, Shirley, NY 11967, USA

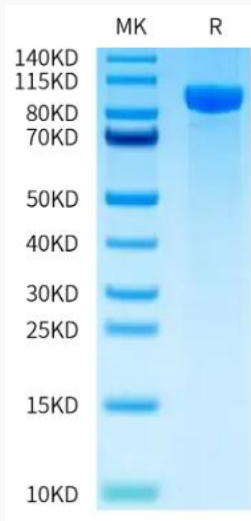
Storage	Samples are stable for up to twelve months from date of receipt at -20°C to -80°C. Store it under sterile conditions at -20°C to -80°C. It is recommended that the protein be aliquoted for optimal storage. Avoid repeated freeze-thaw cycles.
Reconstitution	Centrifuge the tube before opening. Reconstituting to a concentration more than 100 µg/ml is recommended. Dissolve the lyophilized protein in distilled water.
Conjugation	FITC
GENE INFORMATION	
Gene Name	ERBB3 v-erb-b2 erythroblastic leukemia viral oncogene homolog 3 (avian) [Homo sapiens]
Official Symbol	ERBB3
Synonyms	ERBB3; v-erb-b2 erythroblastic leukemia viral oncogene homolog 3 (avian); LCCS2, lethal congenital contracture syndrome 2; receptor tyrosine-protein kinase erbB-3; HER3; proto-oncogene-like protein c-ErbB-3; tyrosine kinase-type cell surface receptor HER3; LCCS2; ErbB-3; c-erbB3; erbB3-S; MDA-BF-1; c-erbB-3; p180-ErbB3; p45-sErbB3; p85-sErbB3; MGC88033
Gene ID	2065
mRNA Refseq	NM_001005915
Protein Refseq	NP_001005915
MIM	190151
UniProt ID	P21860

 Tel: 1-631-559-9269 1-516-512-3133

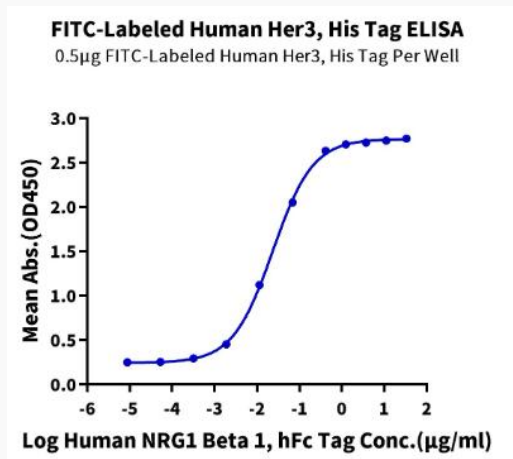
 Email: info@creative-biomart.com  Fax: 1-631-938-8127

 45-1 Ramsey Road, Shirley, NY 11967, USA

SDS-PAGE



Activity



 Tel: 1-631-559-9269 1-516-512-3133

 Email: info@creative-biomart.com  Fax: 1-631-938-8127

 45-1 Ramsey Road, Shirley, NY 11967, USA