

Recombinant Human ERBB3 Protein (Ser20-Cys331), C-Fc tagged

Cat. No. ERBB3-2614H Lot. No. (See product label)

SPECIFICATION

Product Overview	Recombinant human ERBB3 (Ser20-Cys331) protein fused with the C-terminal Fc tag was expressed in Mammalian cells.
Species	Human
Source	Mammalian Cells
ProteinLength	Ser20-Cys331
Molecular Mass	59.32 kDa
Purity	>90 % as determined by SDS-PAGE.
Notes	For research use only.
Storage	Use a manual defrost freezer and avoid repeated freeze thaw cycles. Store at 2 to 8 centigrade for one week. Store at -20 to -80 centigrade for twelve months from the date of receipt.
Storage Buffer	Supplied as solution form in PBS or lyophilized from PBS.
Reconstitution	Reconstitute in sterile water for a stock solution.
Shipping	In general, proteins are provided as lyophilized powder/frozen liquid. They are

 Tel: 1-631-559-9269 1-516-512-3133

 Email: info@creative-biomart.com  Fax: 1-631-938-8127

 45-1 Ramsey Road, Shirley, NY 11967, USA

shipped out with dry ice/blue ice unless customers require otherwise.

GENE INFORMATION

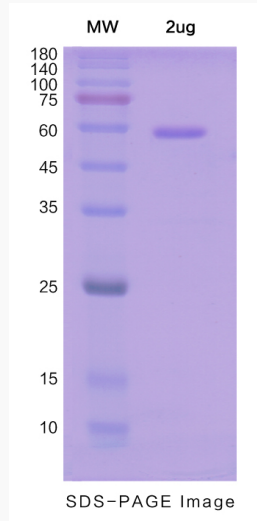
Gene Name	ERBB3 v-erb-b2 erythroblastic leukemia viral oncogene homolog 3 (avian) [Homo sapiens (human)]
Official Symbol	ERBB3
Synonyms	ERBB3; v-erb-b2 erythroblastic leukemia viral oncogene homolog 3 (avian); LCCS2, lethal congenital contracture syndrome 2; receptor tyrosine-protein kinase erbB-3; HER3; proto-oncogene-like protein c-ErbB-3; tyrosine kinase-type cell surface receptor HER3; LCCS2; ErbB-3; c-erbB3; erbB3-S; MDA-BF-1; c-erbB-3; p180-ErbB3; p45-sErbB3; p85-sErbB3; MGC88033;
Gene ID	2065
mRNA Refseq	NM_001005915
Protein Refseq	NP_001005915
MIM	190151
UniProt ID	P21860

 Tel: 1-631-559-9269 1-516-512-3133

 Email: info@creative-biomart.com  Fax: 1-631-938-8127

 45-1 Ramsey Road, Shirley, NY 11967, USA

SDS-PAGE



 Tel: 1-631-559-9269 1-516-512-3133

 Email: info@creative-biomart.com  Fax: 1-631-938-8127

 45-1 Ramsey Road, Shirley, NY 11967, USA