

Recombinant Human ERBB3 protein, His-Avi-tagged, Biotinylated

Cat. No. ERBB3-284H Lot. No. (See product label)

SPECIFICATION

Product Overview	Biotinylated Recombinant Human ERBB3 protein(P21860-1)(Ser20-Thr643), fused with C-terminal His and Avi tag, was expressed in HEK293.
Species	Human
Source	HEK293
ProteinLength	Ser20-Thr643
Tag	C-His-Avi
Conjugation/Label	Biotin
Form	Lyophilized from 0.22µm filtered solution in PBS (pH 7.4). Normally 8% trehalose is added as protectant before lyophilization.
Bio-activity	Immobilized Biotinylated Human Her3, His Tag at 2 ug/ml (100 ul/well) on the streptavidin precoated plate (5 ug/ml). Dose response curve for Human NRG1 Beta 1, hFc Tag with the EC50 of 8.3 ng/ml determined by ELISA.
Molecular Mass	The protein has a predicted MW of 71.6 kDa. Due to glycosylation, the protein migrates to 90-100 kDa based on Tris-Bis PAGE result.
Endotoxin	Less than 1EU per µg by the LAL method.

 Tel: 1-631-559-9269 1-516-512-3133

 Email: info@creative-biomart.com  Fax: 1-631-938-8127

 45-1 Ramsey Road, Shirley, NY 11967, USA

Purity	> 95% as determined by Tris-Bis PAGE;> 95% as determined by HPLC
Storage	Reconstituted protein stable at -80°C for 12 months, 4°C for 1 week. Use a manual defrost freezer and avoid repeated freeze-thaw cycles.
Reconstitution	Centrifuge tubes before opening. Reconstituting to a concentration more than 100 µg/ml is recommended. Dissolve the lyophilized protein in distilled water.
Conjugation	Biotin

GENE INFORMATION

Gene Name	ERBB3 v-erb-b2 erythroblastic leukemia viral oncogene homolog 3 (avian) [Homo sapiens]
Official Symbol	ERBB3
Synonyms	ERBB3; v-erb-b2 erythroblastic leukemia viral oncogene homolog 3 (avian); LCCS2, lethal congenital contracture syndrome 2; receptor tyrosine-protein kinase erbB-3; HER3; proto-oncogene-like protein c-ErbB-3; tyrosine kinase-type cell surface receptor HER3; LCCS2; ErbB-3; c-erbB3; erbB3-S; MDA-BF-1; c-erbB-3; p180-ErbB3; p45-sErbB3; p85-sErbB3; MGC88033;
Gene ID	2065
mRNA Refseq	NM_001005915
Protein Refseq	NP_001005915
MIM	190151

 Tel: 1-631-559-9269 1-516-512-3133

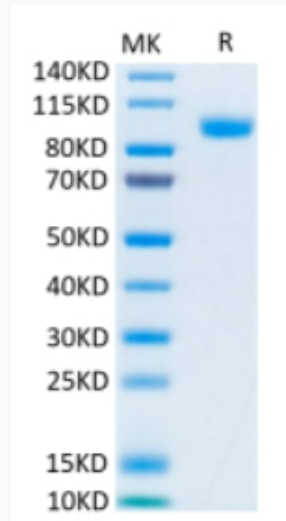
 Email: info@creative-biomart.com  Fax: 1-631-938-8127

 45-1 Ramsey Road, Shirley, NY 11967, USA

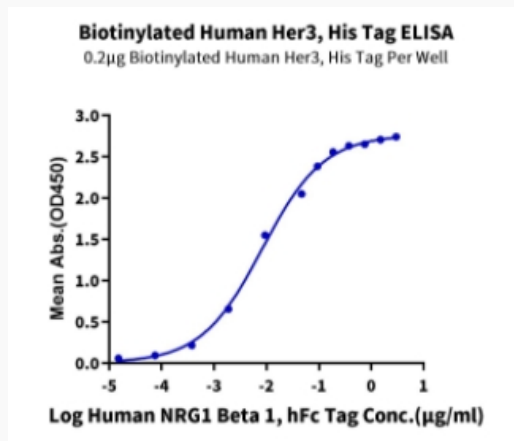
UniProt ID

P21860

Tris-Bis PAGE



ELISA Data



Tel: 1-631-559-9269 1-516-512-3133

Email: info@creative-biomart.com Fax: 1-631-938-8127

45-1 Ramsey Road, Shirley, NY 11967, USA