

Recombinant Human ERBB3 Protein, GST-tagged

Cat. No. ERBB3-3448H Lot. No. (See product label)

SPECIFICATION

Product Overview	Human ERBB3 full-length ORF (AAH02706, 21 a.a. - 331 a.a.) recombinant protein with GST-tag at N-terminal.
Species	Human
Source	Wheat Germ
Description	<p>This gene encodes a member of the epidermal growth factor receptor (EGFR) family of receptor tyrosine kinases. This membrane-bound protein has a neuregulin binding domain but not an active kinase domain. It therefore can bind this ligand but not convey the signal into the cell through protein phosphorylation. However, it does form heterodimers with other EGF receptor family members which do have kinase activity. Heterodimerization leads to the activation of pathways which lead to cell proliferation or differentiation. Amplification of this gene and/or overexpression of its protein have been reported in numerous cancers, including prostate, bladder, and breast tumors. Alternate transcriptional splice variants encoding different isoforms have been characterized. One isoform lacks the intermembrane region and is secreted outside the cell. This form acts to modulate the activity of the membrane-bound form. Additional splice variants have also been reported, but they have not been thoroughly characterized. [provided by RefSeq, Jul 2008]</p>
Molecular Mass	59.95 kDa
AA Sequence	EVGNSQAVCPGTLNGLSVTGDAENQYQTLTKLYRCEVVMGNLEIVLTGHNADLSF

 Tel: 1-631-559-9269 1-516-512-3133

 Email: info@creative-biomart.com  Fax: 1-631-938-8127

 45-1 Ramsey Road, Shirley, NY 11967, USA

LQWIREVTGYVLVAMNEFSTLPLPNLRVVRGTQVYDYGKFAIFVMLNYNTNSSHALRQ
 LRLTQLTEILSGGVYIEKNDKLCHMDTIDWRDIVRDRDAEIVVKDNGRSCPPCHEVCK
 GRCWGPGEEDCQTLTKTICAPQCNGHCFGNPNQCCHDECAGGCSGPQDTCFA
 CRHFNDSGACVPRCPQPLVYNKLTFLQLEPNPHTKYQYGGVVCVASCPHNFVVDQTS
 CVRACPPDKMEVDKNGLMCEPCGGLCPKAF

Applications
 Enzyme-linked Immunoabsorbent Assay
 Western Blot (Recombinant protein)
 Antibody Production
 Protein Array

Notes Best use within three months from the date of receipt of this protein.

Storage Store at -80 centigrade. Aliquot to avoid repeated freezing and thawing.

Storage Buffer 50 mM Tris-HCl, 10 mM reduced Glutathione, pH=8.0 in the elution buffer.

GENE INFORMATION

Gene Name [ERBB3 v-erb-b2 erythroblastic leukemia viral oncogene homolog 3 \(avian\) \[Homo sapiens \]](#)

Official Symbol [ERBB3](#)

Synonyms ERBB3; v-erb-b2 erythroblastic leukemia viral oncogene homolog 3 (avian); LCCS2, lethal congenital contracture syndrome 2; receptor tyrosine-protein kinase erbB-3; HER3; proto-oncogene-like protein c-ErbB-3; tyrosine kinase-type cell surface receptor HER3; LCCS2; ErbB-3; c-erbB3; erbB3-S; MDA-BF-1; c-erbB-3; p180-ErbB3; p45-sErbB3; p85-sErbB3; MGC88033;

Gene ID [2065](#)

 Tel: 1-631-559-9269 1-516-512-3133

 Email: info@creative-biomart.com  Fax: 1-631-938-8127

 45-1 Ramsey Road, Shirley, NY 11967, USA

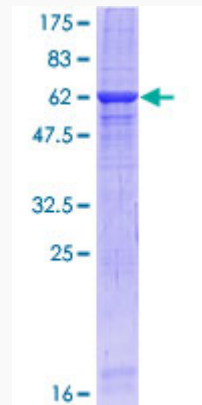
mRNA Refseq [NM_001005915](#)

Protein Refseq [NP_001005915](#)

MIM [190151](#)

UniProt ID [P21860](#)

**Quality Control
Testing**



12.5% SDS-PAGE Stained with Coomassie Blue.

 Tel: 1-631-559-9269 1-516-512-3133

 Email: info@creative-biomart.com  Fax: 1-631-938-8127

 45-1 Ramsey Road, Shirley, NY 11967, USA