

Recombinant Full Length Human ERBB3 Protein, C-Flag-tagged

Cat. No. ERBB3-411HFL Lot. No. (See product label)

SPECIFICATION

Product Overview

Recombinant Full Length Human ERBB3 Protein, fused to Flag-tag at C-terminus, was expressed in Mammalian cells.

Species

Human

Source

Mammalian Cells

Description

This gene encodes a member of the epidermal growth factor receptor (EGFR) family of receptor tyrosine kinases. This membrane-bound protein has a neuregulin binding domain but not an active kinase domain. It therefore can bind this ligand but not convey the signal into the cell through protein phosphorylation. However, it does form heterodimers with other EGF receptor family members which do have kinase activity. Heterodimerization leads to the activation of pathways which lead to cell proliferation or differentiation. Amplification of this gene and/or overexpression of its protein have been reported in numerous cancers, including prostate, bladder, and breast tumors. Alternate transcriptional splice variants encoding different isoforms have been characterized. One isoform lacks the intermembrane region and is secreted outside the cell. This form acts to modulate the activity of the membrane-bound form. Additional splice variants have also been reported, but they have not been thoroughly characterized.

Form

25 mM Tris HCl, pH 7.3, 100 mM glycine, 10% glycerol.

 Tel: 1-631-559-9269 1-516-512-3133

 Email: info@creative-biomart.com  Fax: 1-631-938-8127

 45-1 Ramsey Road, Shirley, NY 11967, USA

Molecular Mass 146 kDa**AA Sequence**

MRANDALQVLGLLFLSLARGSEVGNLSQAVCPGTLNGLSVTGDENQYQTLTKLYERC
EVVMGNLEIVLTGH NADLSFLQWIREVTGYVLVAMNEFSTLPLPNLRVVRGTQVYD
GKFAIFVMLNYNTNSSHALRQLRLTQLT EILSGGVYIEKNDKLCHMDTIDWRDIVRDR
DAEIVVKDNGRSCPPCHEVCKGRCWGPGESEDCQTLTKTIC APQCNGHCFGNPNP
QCCHDECAGGCSGPQDTCFACRHFNDSGACVPRCPQPLVYNKLTFLQLEPNPHTK
Y QYGGVVCVASCPHNFVVDQTSCVRACPPDKMEVDKNGLKMCEPCGGLCPKACEG
TGSGSRFQTVDSSNIDG FVNCTKILGNLDFLITGLNGDPWHKIPALDPEKLNVFRTV
REITGYLNIQSWPPHMHNFVFSNLTTIGG RSLYNRFGSLLIMKNLNVTSLGFRSLKE
ISAGRIYISANRQLCYHHSLNWTKVLRGPTEERLDIKHNRPR RDCVAEGKVCPLCS
SGGCWGPQPGQCLSCRNYSRGGVCVTHCNFLNGEPREFAHEAECFSCHPECQP
ME GTATCNGSGSDTCAQCAHFRDGPCHVSSCPHGVLGAKGPIYKYPDVQNECRP
CHENCTQGCKGPELQDCL GQTLVLIGKTHLTALTVIAGLVVIFMMLGGTFLYWRG
RRIQNKRAMRRYLERGESEIPLDPSEKANKVL ARIFKETELRKLKVLGSGVFGTVHK
GVWIPEGESIKIPVCIKVIEDKSGRQSFQAVTDHMLAIGSLDHAH IVRLGLCPGSSL
QLVTQYLPLGSLLDHVRQHRGALGPQLLLNWGVQIAKGMYYLEEHGMVHRNLAAR
NV LLKSPSQVQVADFGVADLLPPDDKQLLYSEAKTPIKWMALESIHFQKYTHQSDV
WSYGVTVWELMTFGAE PYAGLRLAEVDPDLEKGERLAQPQICTIDVYMVMVKCWM
IDENIRPTFKELANEFTRMARDPPRYLVIKR ESGPGIAPGPEPHGLTNKKLEEVELEP
ELDLDLLEAEEDNLATTTLGSALSPLVGTLNRPGRSQSLLSP SSGYMPMNQGNLG
ESCQESAVSGSSERCPRPVSLHPMPRGCLASESSEGHVTGSEAELEKQVSMCRSR
SR SRSRPRGDSAYHSQRHSLTPVTPLSPPGLEEEDVNGYVMPDTHLKGTPSSR
EGTLSSVGLSSVLGTEE EDEDEEYEMNRRRRHSPHPRPSLEELGYEYMDVG
SDLSASLGSTQSCPLHPVPIMPTAGTTPDEDY EYMNRQRDGGGPGDYAAMGAC
PASEQGYEEMRAFQGPQGHQAPHVHYARLKTLSLEATDSAFDNPDYWH
SRLFPKANAQRTRTRPLEQKLISEEDLAANDILDYKDDDDKV

Purity > 80% as determined by SDS-PAGE and Coomassie blue staining. Tel: 1-631-559-9269 1-516-512-3133 Email: info@creative-biomart.com  Fax: 1-631-938-8127 45-1 Ramsey Road, Shirley, NY 11967, USA

Stability	Stable for 12 months from the date of receipt of the product under proper storage and handling conditions. Avoid repeated freeze-thaw cycles.
Storage	Store at -80 centigrade.
Concentration	>50 ug/mL as determined by microplate BCA method.
Preparation	Recombinant protein was captured through anti-DDK affinity column followed by conventional chromatography steps.
Protein Families	Adult stem cells, Druggable Genome, Protein Kinase, Secreted Protein, Stem cell - Pluripotency, Transmembrane
Protein Pathways	Calcium signaling pathway, Endocytosis, ErbB signaling pathway
Full Length	Full L.

GENE INFORMATION

Gene Name	ERBB3 erb-b2 receptor tyrosine kinase 3 [Homo sapiens (human)] Gene ID: 2065, updated on 30-Oct-2022 Download Datasets
Official Symbol	ERBB3
Synonyms	HER3; FERLK; LCCS2; VSCN1; ErbB-3; c-erbB3; erbB3-S; MDA-BF-1; c-erbB-3; p180-ErbB3; p45-sErbB3; p85-sErbB3
Gene ID	2065
mRNA Refseq	NM_001982.4

 Tel: 1-631-559-9269 1-516-512-3133

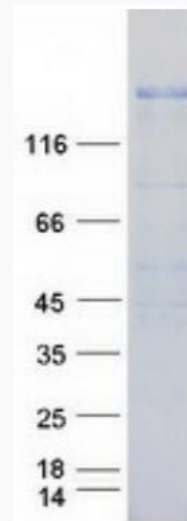
 Email: info@creative-biomart.com  Fax: 1-631-938-8127

 45-1 Ramsey Road, Shirley, NY 11967, USA

Protein Refseq NP_001973.2

MIM 190151

UniProt ID P21860



Coomassie blue staining of purified ERBB3 protein.

 Tel: 1-631-559-9269 1-516-512-3133

 Email: info@creative-biomart.com  Fax: 1-631-938-8127

 45-1 Ramsey Road, Shirley, NY 11967, USA