

## Active Recombinant Human ERBB3 protein, hFc-tagged

Cat. No. ERBB3-44H Lot. No. (See product label)

### SPECIFICATION

|                         |   |
|-------------------------|---|
| <b>Product Overview</b> | Active Recombinant Human ERBB3 protein(P21860)(Ser20-Thr643) is expressed from HEK293 with hFc (IgG1) tag at the C-Terminus.  |
| <b>Species</b>          | Human   |
| <b>Source</b>           | HEK293  |
| <b>ProteinLength</b>    | 20-643 aa   |
| <b>Form</b>             | Lyophilized from 0.22µm filtered solution in PBS (pH 7.4).  |
| <b>Bio-activity</b>     | Immobilized Human Her3, hFc Tag at 5µg/ml (100µl/well) on the plate. Dose response curve for Biotinylated Human NRG1 Beta 1, hFc Tag with the EC50 of 0.33µg/ml determined by ELISA.                                    |
| <b>Molecular Mass</b>   | The protein has a predicted MW of 95.4 kDa. Due to glycosylation, the protein migrates to 110-120 kDa based on Bis-Tris PAGE result.  |
| <b>Endotoxin</b>        | Less than 1 EU per µg by the LAL method.  |
| <b>Purity</b>           | > 95% as determined by Bis-Tris PAGE > 95% as determined by HPLC  |
| <b>Storage</b>          | -20 to -80°C for 12 months as supplied from date of receipt. -80°C for 3 months after reconstitution. Recommend to aliquot the protein into smaller quantities for optimal storage. Please minimize freeze-thaw cycles. |

 Tel: 1-631-559-9269 1-516-512-3133

 Email: [info@creative-biomart.com](mailto:info@creative-biomart.com)  Fax: 1-631-938-8127

 45-1 Ramsey Road, Shirley, NY 11967, USA

**Reconstitution**      Dissolve the lyophilized protein in distilled water.

## GENE INFORMATION

**Gene Name**      ERBB3 v-erb-b2 erythroblastic leukemia viral oncogene homolog 3 (avian) [ Homo sapiens ]

**Official Symbol**      ERBB3

**Synonyms**      ERBB3; v-erb-b2 erythroblastic leukemia viral oncogene homolog 3 (avian); LCCS2, lethal congenital contracture syndrome 2; receptor tyrosine-protein kinase erbB-3; HER3; proto-oncogene-like protein c-ErbB-3; tyrosine kinase-type cell surface receptor HER3; LCCS2; ErbB-3; c-erbB3; erbB3-S; MDA-BF-1; c-erbB-3; p180-ErbB3; p45-sErbB3; p85-sErbB3; MGC88033;

**Gene ID**      2065

**mRNA Refseq**      NM\_001005915

**Protein Refseq**      NP\_001005915

**MIM**      190151

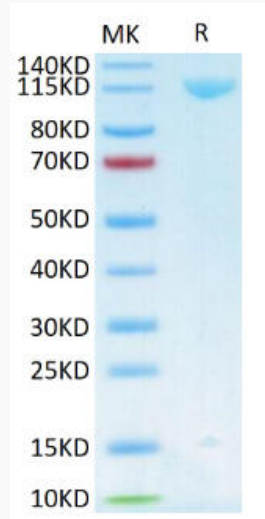
**UniProt ID**      P21860

 Tel: 1-631-559-9269    1-516-512-3133

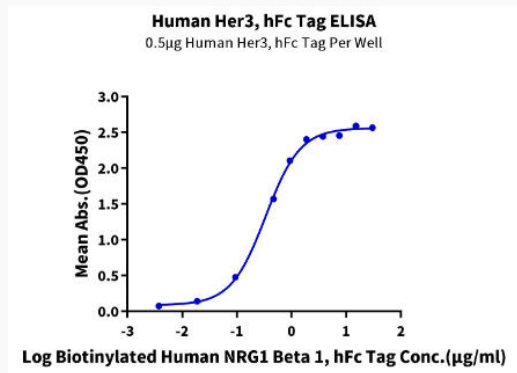
 Email: [info@creative-biomart.com](mailto:info@creative-biomart.com)     Fax: 1-631-938-8127

 45-1 Ramsey Road, Shirley, NY 11967, USA

**Bis-Tris PAGE**



**ELISA Data**



 Tel: 1-631-559-9269 1-516-512-3133

 Email: [info@creative-biomart.com](mailto:info@creative-biomart.com)  Fax: 1-631-938-8127

 45-1 Ramsey Road, Shirley, NY 11967, USA