

Active Recombinant Human ERBB3 protein, His&GST-tagged

Cat. No. ERBB3-7276H Lot. No. (See product label)

SPECIFICATION

Product Overview	Active Recombinant Human ERBB3 protein(Pro 730-Ser 1065)(NP_001973.2) was expressed in Insect Cells, fused with the N-terminal polyhistidine-tagged GST tag at the N-terminus.
Species	Human
Source	Insect Cells
ProteinLength	730-1065 aa
Form	Lyophilized from sterile 50mM Tris, 100mM NaCl, pH 7.5, 10% gly, 1mM GSH.
Bio-activity	1. No Kinase Activity 2. Using the Octet RED System, the affinity constant (Kd) of human ErBB3-GST bound to human NRG1 (aa 2-224) was 20 nM.
Molecular Mass	The recombinant human ErbB3 /GST chimera consists of 573 amino acids and has a calculated molecular mass of 65 KDa. It migrates as an approximately 65 KDa band as predicted in SDS-PAGE under reducing conditions.
Endotoxin	< 1 EU/g as determined by LAL test.
Purity	> 82 % as determined by SDS-PAGE
Storage	Store it under sterile conditions at -20°C to -80°C upon receiving. Recommend to aliquot the protein into smaller quantities for optimal storage. Avoid repeated freeze-

 Tel: 1-631-559-9269 1-516-512-3133

 Email: info@creative-biomart.com  Fax: 1-631-938-8127

 45-1 Ramsey Road, Shirley, NY 11967, USA

thaw cycles.

Reconstitution

It is recommended that sterile water be added to the vial to prepare a stock solution of 0.2 ug/ul. Centrifuge the vial at 4°C before opening to recover the entire contents.

GENE INFORMATION

Gene Name

ERBB3 v-erb-b2 erythroblastic leukemia viral oncogene homolog 3 (avian) [Homo sapiens]

Official Symbol

ERBB3

Synonyms

ERBB3; v-erb-b2 erythroblastic leukemia viral oncogene homolog 3 (avian); LCCS2, lethal congenital contracture syndrome 2; receptor tyrosine-protein kinase erbB-3; HER3; proto-oncogene-like protein c-ErbB-3; tyrosine kinase-type cell surface receptor HER3; LCCS2; ErbB-3; c-erbB3; erbB3-S; MDA-BF-1; c-erbB-3; p180-ErbB3; p45-sErbB3; p85-sErbB3; MGC88033;

Gene ID

2065

mRNA Refseq

NM_001005915

Protein Refseq

NP_001005915

MIM

190151

UniProt ID

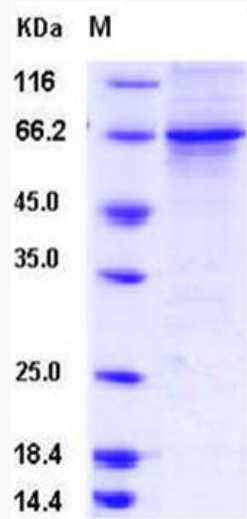
P21860

 Tel: 1-631-559-9269 1-516-512-3133

 Email: info@creative-biomart.com  Fax: 1-631-938-8127

 45-1 Ramsey Road, Shirley, NY 11967, USA

SDS-PAGE



 Tel: 1-631-559-9269 1-516-512-3133

 Email: info@creative-biomart.com  Fax: 1-631-938-8127

 45-1 Ramsey Road, Shirley, NY 11967, USA