

Recombinant Human ERBB4 protein, His-Avi-tagged

Cat. No. ERBB4-6744H Lot. No. (See product label)

SPECIFICATION

Product Overview	Recombinant Human ERBB4 protein(Q15303-1)(Gln26-Pro651), fused with C-terminal His and Avi tag, was expressed in HEK293.
Species	Human
Source	HEK293
ProteinLength	Gln26-Pro651
Tag	C-His-Avi
Form	Lyophilized from 0.22µm filtered solution in PBS (pH 7.4). Normally 8% trehalose is added as protectant before lyophilization.
Bio-activity	Immobilized Human Her4 at 1µg/ml (100µl/well) on the plate. Dose response curve for Human NRG1 Beta 1, hFc Tag with the EC50 of 34.7ng/ml determined by ELISA.
Molecular Mass	The protein has a predicted MW of 72.7 kDa. Due to glycosylation, the protein migrates to 80-110 kDa based on Tris-Bis PAGE result.
Endotoxin	Less than 1EU per µg by the LAL method.
Purity	> 95% as determined by Tris-Bis PAGE; > 95% as determined by HPLC
Storage	Reconstituted protein stable at -80°C for 12 months, 4°C for 1 week. Use a manual

 Tel: 1-631-559-9269 1-516-512-3133

 Email: info@creative-biomart.com  Fax: 1-631-938-8127

 45-1 Ramsey Road, Shirley, NY 11967, USA

defrost freezer and avoid repeated freeze-thaw cycles.

Reconstitution

Centrifuge tubes before opening. Reconstituting to a concentration more than 100 µg/ml is recommended. Dissolve the lyophilized protein in distilled water.

GENE INFORMATION

Gene Name

ERBB4 v-erb-a erythroblastic leukemia viral oncogene homolog 4 (avian) [Homo sapiens]

Official Symbol

ERBB4

Synonyms

ERBB4; v-erb-a erythroblastic leukemia viral oncogene homolog 4 (avian); v erb a avian erythroblastic leukemia viral oncogene homolog like 4; receptor tyrosine-protein kinase erbB-4; proto-oncogene-like protein c-ErbB-4; tyrosine kinase-type cell surface receptor HER4; avian erythroblastic leukemia viral (v-erb-b2) oncogene homolog 4; HER4; p180erbB4; MGC138404;

Gene ID

2066

mRNA Refseq

NM_001042599

Protein Refseq

NP_001036064

MIM

600543

UniProt ID

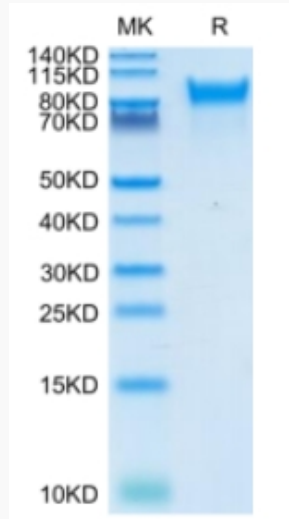
Q15303

 Tel: 1-631-559-9269 1-516-512-3133

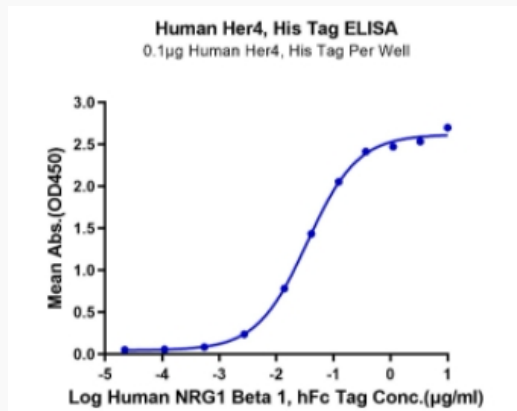
 Email: info@creative-biomart.com  Fax: 1-631-938-8127

 45-1 Ramsey Road, Shirley, NY 11967, USA

Tris-Bis PAGE



ELISA Data



 Tel: 1-631-559-9269 1-516-512-3133

 Email: info@creative-biomart.com  Fax: 1-631-938-8127

 45-1 Ramsey Road, Shirley, NY 11967, USA