

## Recombinant Human ERC1 Protein, GST-tagged

Cat. No. ERC1-3453H Lot. No. (See product label)

### SPECIFICATION

<b>Product Overview</b>	Human ERC1 full-length ORF ( AAH05065.1, 1 a.a. - 91 a.a.) recombinant protein with GST-tag at N-terminal.
<b>Species</b>	Human
<b>Source</b>	Wheat Germ
<b>Description</b>	The protein encoded by this gene is a member of a family of RIM-binding proteins. RIMs are active zone proteins that regulate neurotransmitter release. This gene has been found fused to the receptor-type tyrosine kinase gene RET by gene rearrangement due to the translocation t(10;12)(q11;p13) in thyroid papillary carcinoma. Alternative splicing results in multiple transcript variants. [provided by RefSeq, Jul 2014]
<b>Molecular Mass</b>	36.4 kDa
<b>AA Sequence</b>	MPKQVVWHGHWPAALSKQVAQIPPTWTFSSGAAPATLSHWVCDSPHLHSILHHFPS RKTDGRKPSVTLLRRSISGTDIICLVSVNSKESS
<b>Applications</b>	Enzyme-linked Immunoabsorbent Assay Western Blot (Recombinant protein) Antibody Production Protein Array
<b>Notes</b>	Best use within three months from the date of receipt of this protein.

 Tel: 1-631-559-9269 1-516-512-3133

 Email: [info@creative-biomart.com](mailto:info@creative-biomart.com)  Fax: 1-631-938-8127

 45-1 Ramsey Road, Shirley, NY 11967, USA

**Storage** Store at -80 centigrade. Aliquot to avoid repeated freezing and thawing.

**Storage Buffer** 50 mM Tris-HCl, 10 mM reduced Glutathione, pH=8.0 in the elution buffer.

## GENE INFORMATION

**Gene Name** [ERC1 ELKS/RAB6-interacting/CAST family member 1 \[ Homo sapiens \]](#)

**Official Symbol** [ERC1](#)

**Synonyms**

ERC1; ELKS/RAB6-interacting/CAST family member 1; RAB6 interacting protein 2 , RAB6IP2; ELKS/Rab6-interacting/CAST family member 1; CAST2; ELKS; KIAA1081; MGC12974; RAB6 interacting protein 2; Rab6-interacting protein 2; Cast2; RAB6IP2; FLJ31750;

**Gene ID** [23085](#)

**mRNA Refseq** [NM\\_178039](#)

**Protein Refseq** [NP\\_829883](#)

**MIM** [607127](#)

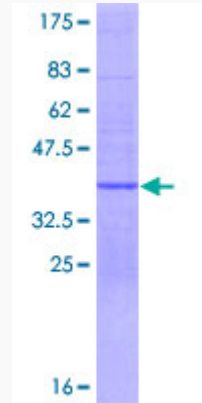
**UniProt ID** [Q8IUD2](#)

 Tel: 1-631-559-9269 1-516-512-3133

 Email: [info@creative-biomart.com](mailto:info@creative-biomart.com)  Fax: 1-631-938-8127

 45-1 Ramsey Road, Shirley, NY 11967, USA

**Quality Control  
Testing**



12.5% SDS-PAGE Stained with Coomassie Blue.

 Tel: 1-631-559-9269 1-516-512-3133

 Email: [info@creative-biomart.com](mailto:info@creative-biomart.com)  Fax: 1-631-938-8127

 45-1 Ramsey Road, Shirley, NY 11967, USA