

# Recombinant Human ERC1 Protein, Myc/DDK-tagged, C13 and N15-labeled

**Cat. No.** ERC1-4087H    **Lot. No.** (See product label)

## SPECIFICATION

### Product Overview

ERC1 MS Standard C13 and N15-labeled recombinant protein (NP\_829884) with a C-terminal MYC/DDK tag, was expressed in HEK293 cells.

### Species

Human

### Source

HEK293

### Description

The protein encoded by this gene is a member of a family of RIM-binding proteins. RIMs are active zone proteins that regulate neurotransmitter release. This gene has been found fused to the receptor-type tyrosine kinase gene RET by gene rearrangement due to the translocation t(10;12)(q11;p13) in thyroid papillary carcinoma. Alternative splicing results in multiple transcript variants.

### Molecular Mass

127.9 kDa

### AA Sequence

MYGSARSVGKVEPSSQSPGRSPRLPRSPRLGHRRTNSTGGSSGSSVGGGSGKTL  
SMENIQSLNAAAYATSGPMYLSDHENVGSETPKSTMTLGRSGGRLPYGVRMTAMGS  
SPNIASSGVASDTIAFGEHHLPPVSMASVPHSLRQARDNTIMDLQTQLKEVLRND  
LLRKDVEVKESKLSSSMNSIKTFWSPELKKERALRKDEASKITIWKEQYRVVQEENQ  
HMQMTIQALQDELRIQRDLNQLFQQDSSSRTGEPVVAELTEENFQRLHAEHERQAK  
ELFLLRKTLEEMELRIETQKQTLNARDESIKKLLEMLQSKGLSAKATEEDHERTRRLA  
EAEMHVHLESLLLEQKEKENSMLREEMHRRFENAPDSAKTKALQTVIEMKDSKISS  
MERGLRDLEEEIQMLKSNLALSTEEREEEMKQMEVYRSHSKFMKNKVEQLKEELSS

 Tel: 1-631-559-9269    1-516-512-3133

 Email: [info@creative-biomart.com](mailto:info@creative-biomart.com)     Fax: 1-631-938-8127

 45-1 Ramsey Road, Shirley, NY 11967, USA



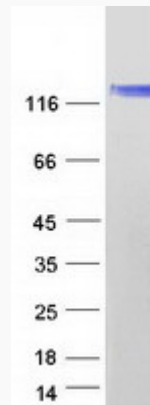
KEAQWEELKKKAAGLQAEIGQVKQELSRKDTELLALQTKLETLTNQFSDSKQHIEVL  
 KESLTAKEQRAAILQTEVDALRLRLEEKETMLNKKTKQIQDMAEEKGTQAGEIHDLK  
 DMLDVKERKVVNLQKKIENLQEQLRDKEKQMSSLKERVKSLQADTTNTDTALTLEE  
 ALAEKERTIERLKEQRDRDEREKQEEIDNYKKDLKDLKEKVSLLQGDLSKEASLLDL  
 KEHASSLASSGLKKDSRLKTLIALEQKKEECKMESQLKKAHEAALEARASPEMSD  
 RIQHLEIREITRYKDESSKAQAEVDRILLEILKEVENEKNDKDKKIAELERQVKDQNKKV  
 ANLKHKEQVEKKKSAQMLEEARRREDNLNDSSQQLQDSLRRKKDDRIEELEEALRES  
 VQITAEREMVLAQEEESARTNAEKQVEELLMAMEKVKQELESMAKLSSTQQSLAEK  
 ETHLTNLRAERRKHLEEVLEMKQEALLAAISEKDANIALLELSSSKKKTQEEVAALKR  
 EKDRLVQQLKQQTQNRMKLMADNYEDDHFKSSHSNQTNHKPSPDQIIQPLLELDQN  
 RSKLKLYIGHLTTLCHDRDPLILRGLTPPASYNLDDDQAAWENELQKMTRGQLQDEL  
 EKGERDNAELQEFANAILQQIADHCPDILEQVVNALEESSTRTRPLEQKLISEEDLAA  
 NDILDYKDDDDKV

<b>Purity</b>	> 80% as determined by SDS-PAGE and Coomassie blue staining
<b>Stability</b>	Stable for 3 months from receipt of products under proper storage and handling conditions.
<b>Storage</b>	Store at -80 centigrade. Avoid repeated freeze-thaw cycles.
<b>Concentration</b>	50 µg/mL as determined by BCA
<b>Storage Buffer</b>	100 mM glycine, 25 mM Tris-HCl, pH 7.3.

## GENE INFORMATION

<b>Gene Name</b>	ERC1 ELKS/RAB6-interacting/CAST family member 1 [ Homo sapiens (human) ]
<b>Official Symbol</b>	ERC1

<b>Synonyms</b>	ERC1; ELKS/RAB6-interacting/CAST family member 1; RAB6 interacting protein 2, RAB6IP2; ELKS/Rab6-interacting/CAST family member 1; CAST2; ELKS; KIAA1081; MGC12974; RAB6 interacting protein 2; Rab6-interacting protein 2; Cast2; RAB6IP2; FLJ31750;
<b>Gene ID</b>	23085
<b>mRNA Refseq</b>	NM_178040
<b>Protein Refseq</b>	NP_829884
<b>MIM</b>	607127
<b>UniProt ID</b>	Q8IUD2

**SDS-PAGE**


 Tel: 1-631-559-9269 1-516-512-3133

 Email: [info@creative-biomart.com](mailto:info@creative-biomart.com)  Fax: 1-631-938-8127

 45-1 Ramsey Road, Shirley, NY 11967, USA