

# Recombinant Full Length Human ERC1 Protein, C-Flag-tagged

Cat. No. ERC1-806HFL Lot. No. (See product label)

## SPECIFICATION

<b>Product Overview</b>	Recombinant Full Length Human ERC1 Protein, fused to Flag-tag at C-terminus, was expressed in Mammalian cells.
<b>Species</b>	Human
<b>Source</b>	Mammalian Cells
<b>Description</b>	The protein encoded by this gene is a member of a family of RIM-binding proteins. RIMs are active zone proteins that regulate neurotransmitter release. This gene has been found fused to the receptor-type tyrosine kinase gene RET by gene rearrangement due to the translocation t(10;12)(q11;p13) in thyroid papillary carcinoma. Alternative splicing results in multiple transcript variants.
<b>Form</b>	25 mM Tris HCl, pH 7.3, 100 mM glycine, 10% glycerol.
<b>Molecular Mass</b>	127.9 kDa
<b>AA Sequence</b>	<p>MYGSARSVGKVEPSSQSPGRSPRLPRSPRLGHRRTNSTGGSSGSSVGGGSGKTL  SMENIQSLNAAAYATSG PMYLSDHENVGSETPKSTMTLGRSGGRLPYGVRMTAMGS  SPNIASSGVASDTIAFGEHHLPPVSMASVTP HSLRQARDNTIMDLQTLKEVLREND  LLRKDVEVKESKLSSSMNSIKTFWSPCLKKERALRKDEASKITI WKEQYRVVQEENQ  HMQMTIQALQDELRIQRDLNQLFQQDSSSRTGEPVVAELTEENFQRLHAEHERQAK  E LFLLRKTL EEMELRIETQKQTLNARDESIKLLLEMLQSKGLSAKATEEDHERTRRLA  EAEMHVHLESLL EQKEKENSMLREEMHRRFENAPDSAKTKALQTVIEMKDSKISS  MERGLRDLEEEIQMLKSNLALSTEERE EEMKQMEVYRSHSKFMKNKVEQLKEELS</p>

 Tel: 1-631-559-9269 1-516-512-3133

 Email: [info@creative-biomart.com](mailto:info@creative-biomart.com)  Fax: 1-631-938-8127

 45-1 Ramsey Road, Shirley, NY 11967, USA

SKEAQWEELKKKAAGLQAEIGQVKQELSRKDTELLALQTKLE TLTNQFSDSKQHIEV  
 LKESLTAKEQRAAILQTEVDALRLRLEEKETMLNKKTKQIQDMAEEKGTQAGEIH DL  
 KDMLDVKERKVNVLQKKIENLQEQLRDKEKQMSSLKERVKSLQADTTNTDTALTTL  
 EALAEKERTIE RLKEQRDRDEREKQEEIDNYKKDLKDLKEKVSLQGDSEKEASLL  
 DLKEHASSLASSGLKKDSRLKLE IALEQKKEECLKMESQLKKAHEAALEARASPEM  
 SDRIQHLEIREITRYKDESSKAQAEVDRILLEILKEVEN EKNDKDKKIAELERQVKDQN  
 KKVANLKHKEQVEKKKSAQMLEEARRREDNLNDSSQQLQDSLRRKDDRIE ELEEAL  
 RESVQITAEREMVLAQEEASARTNAEKQVEELLMAMEKVKQELESMAKLSSTQQSL  
 AEKETHLT NLRAERRKHLEEVLEMKQEALLAAISEKDANIALLELSSSKKKTQEEVAA  
 LKREKDRLVQQLKQQTQNRM KLMADNYEDDHFKSSHSNQTNHKPSPDQIIQPLLEL  
 DQNRSLKLYIGHLTTLCHDRDPLILRGLTPPAS YNLDDDQAAWENELQKMTRGQL  
 QDELEKGERDNAELQEFANAILQQIADHCPDILEQVVALEESSTRTRPLEQKLISEE  
 DLAANDILDYKDDDDKV

<b>Purity</b>	> 80% as determined by SDS-PAGE and Coomassie blue staining.
<b>Stability</b>	Stable for 12 months from the date of receipt of the product under proper storage and handling conditions. Avoid repeated freeze-thaw cycles.
<b>Storage</b>	Store at -80 centigrade.
<b>Concentration</b>	>50 ug/mL as determined by microplate BCA method.
<b>Preparation</b>	Recombinant protein was captured through anti-DDK affinity column followed by conventional chromatography steps.
<b>Protein Families</b>	Druggable Genome
<b>Full Length</b>	Full L.

 Tel: 1-631-559-9269 1-516-512-3133

 Email: [info@creative-biomart.com](mailto:info@creative-biomart.com)  Fax: 1-631-938-8127

 45-1 Ramsey Road, Shirley, NY 11967, USA

## GENE INFORMATION

**Gene Name** ERC1 ELKS/RAB6-interacting/CAST family member 1 [ Homo sapiens (human) ]

**Official Symbol** ERC1

**Synonyms** ELKS; Cast2; ERC-1; RAB6IP2

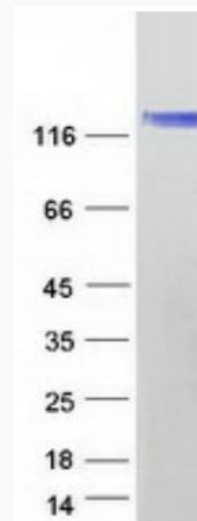
**Gene ID** 23085

**mRNA Refseq** NM\_178040.4

**Protein Refseq** NP\_829884.1

**MIM** 607127

**UniProt ID** Q8IUD2



 Tel: 1-631-559-9269 1-516-512-3133

 Email: [info@creative-biomart.com](mailto:info@creative-biomart.com)  Fax: 1-631-938-8127

 45-1 Ramsey Road, Shirley, NY 11967, USA



Coomassie blue staining of purified ERC1 protein.

 Tel: 1-631-559-9269 1-516-512-3133

 Email: [info@creative-biomart.com](mailto:info@creative-biomart.com)  Fax: 1-631-938-8127

 45-1 Ramsey Road, Shirley, NY 11967, USA