

Recombinant Human ERCC2 Protein

Cat. No. ERCC2-13H Lot. No. (See product label)

SPECIFICATION

Product Overview Recombinant Human ERCC2 Protein was expressed in E. coli.

Species Human

Source E.coli

Description

The nucleotide excision repair pathway is a mechanism to repair damage to DNA. The protein encoded by this gene is involved in transcription-coupled nucleotide excision repair and is an integral member of the basal transcription factor BTF2/TFIIH complex. The gene product has ATP-dependent DNA helicase activity and belongs to the RAD3/XPD subfamily of helicases. Defects in this gene can result in three different disorders, the cancer-prone syndrome xeroderma pigmentosum complementation group D, trichothiodystrophy, and Cockayne syndrome. Alternatively spliced transcript variants encoding different isoforms have been found for this gene.

Form Liquid. In 20 mM Tris-HCl buffer (pH 8.0) containing 0.15 M NaCl.

Molecular Mass ~26.3 kDa

AA Sequence

DGIVAFFTSYQYMESTVASWYEQGILENIQRNKLLFIETQDGAETSVALEKYQEACEN
 GRGAILLSVARGKVSEIDFVHHYGRAVIMFGVPYVYTQSRILKARLEYLRDQFQIRE
 NDFLTFDAMRHAACVGRAIRGKTDYGLMVFADKRFARGDKRGKLPRIWQIHLTD
 ANLNLTVDEGVQVAKYFLRQMAQPFHREDQLGLSLLSLEQLESEETLKRIEQIAQQL

 Tel: 1-631-559-9269 1-516-512-3133

 Email: info@creative-biomart.com  Fax: 1-631-938-8127

 45-1 Ramsey Road, Shirley, NY 11967, USA

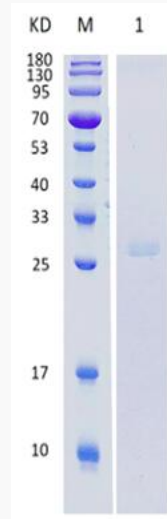
Purity	>90%
Storage	Short Term Storage at 4 centigrade, Long Term, please prepare aliquots with 20% glycerol and store at -20 to -80 centigrade. Avoid freeze/thaw cycles.
Concentration	0.12 mg/ml
Official Full Name	ERCC excision repair 2, TFIIH core complex helicase subunit
GENE INFORMATION	
Gene Name	ERCC2 ERCC excision repair 2, TFIIH core complex helicase subunit [Homo sapiens (human)]
Official Symbol	ERCC2
Synonyms	EM9; TTD; XPD; TTD1; COFS2; TFIIH
Gene ID	2068
mRNA Refseq	NM_000400
Protein Refseq	NP_000391
MIM	126340
UniProt ID	P18074

 Tel: 1-631-559-9269 1-516-512-3133

 Email: info@creative-biomart.com  Fax: 1-631-938-8127

 45-1 Ramsey Road, Shirley, NY 11967, USA

SDS-PAGE



15% SDS-PAGE analysis profiles of purified ERCC2 (CBB stained).

 Tel: 1-631-559-9269 1-516-512-3133

 Email: info@creative-biomart.com  Fax: 1-631-938-8127

 45-1 Ramsey Road, Shirley, NY 11967, USA