

Recombinant Human ERCC2 Protein (Ala404-Leu637), N-His tagged

Cat. No. ERCC2-2397H Lot. No. (See product label)

SPECIFICATION

Product Overview	Recombinant human ERCC2 (Ala404-Leu637) protein fused with the N-His tag was expressed in E. coli.
Species	Human
Source	E.coli
ProteinLength	Ala404-Leu637
Molecular Mass	28.39 kDa
Purity	>90 % as determined by SDS-PAGE.
Notes	For research use only.
Storage	Use a manual defrost freezer and avoid repeated freeze thaw cycles. Store at 2 to 8 centigrade for one week. Store at -20 to -80 centigrade for twelve months from the date of receipt.
Storage Buffer	0.01M PBS, pH 7.4, 0.02 % NLS
Reconstitution	Reconstitute in sterile water for a stock solution.
Shipping	In general, proteins are provided as lyophilized powder/frozen liquid. They are

 Tel: 1-631-559-9269 1-516-512-3133

 Email: info@creative-biomart.com  Fax: 1-631-938-8127

 45-1 Ramsey Road, Shirley, NY 11967, USA

shipped out with dry ice/blue ice unless customers require otherwise.

GENE INFORMATION

Gene Name	ERCC2 excision repair cross-complementing rodent repair deficiency, complementation group 2 [Homo sapiens (human)]
Official Symbol	ERCC2
Synonyms	ERCC2; excision repair cross-complementing rodent repair deficiency, complementation group 2; xeroderma pigmentosum complementary group D, XPD; TFIIH basal transcription factor complex helicase XPD subunit; EM9; excision repair cross complementing rodent repair deficiency; complementation group 2 protein; MAG; MGC102762; MGC126218; MGC126219; CXPD; BTF2 p80; TFIIH p80; TFIIH 80 kDa subunit; DNA excision repair protein ERCC-2; DNA repair protein complementing XP-D cells; basic transcription factor 2 80 kDa subunit; xeroderma pigmentosum complementary group D; xeroderma pigmentosum group D-complementing protein; TFIIH basal transcription factor complex 80 kDa subunit; TFIIH basal transcription factor complex helicase subunit; TTD; XPD; COFS2;
Gene ID	2068
mRNA Refseq	NM_000400
Protein Refseq	NP_000391
MIM	126340
UniProt ID	P18074

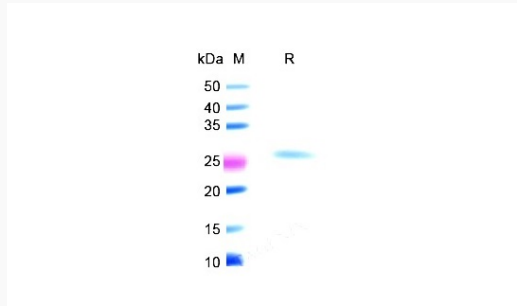
 Tel: 1-631-559-9269 1-516-512-3133

 Email: info@creative-biomart.com  Fax: 1-631-938-8127

 45-1 Ramsey Road, Shirley, NY 11967, USA



SDS-PAGE



Tel: 1-631-559-9269 1-516-512-3133

Email: info@creative-biomart.com Fax: 1-631-938-8127

45-1 Ramsey Road, Shirley, NY 11967, USA