

# Recombinant Human ERCC3 Protein (Arg542-Ala702), N-His tagged

Cat. No. ERCC3-2297H    Lot. No. (See product label)

## SPECIFICATION

<b>Product Overview</b>	Recombinant human ERCC3 (Arg542-Ala702) protein fused with the N-His tag was expressed in E. coli.
<b>Species</b>	Human
<b>Source</b>	E.coli
<b>ProteinLength</b>	Arg542-Ala702
<b>Molecular Mass</b>	20.93 kDa
<b>Purity</b>	>90 % as determined by SDS-PAGE.
<b>Notes</b>	For research use only.
<b>Storage</b>	Use a manual defrost freezer and avoid repeated freeze thaw cycles. Store at 2 to 8 centigrade for one week. Store at -20 to -80 centigrade for twelve months from the date of receipt.
<b>Storage Buffer</b>	0.01M PBS, pH 7.4, 0.02 % NLS
<b>Reconstitution</b>	Reconstitute in sterile water for a stock solution.
<b>Shipping</b>	In general, proteins are provided as lyophilized powder/frozen liquid. They are

 Tel: 1-631-559-9269    1-516-512-3133

 Email: [info@creative-biomart.com](mailto:info@creative-biomart.com)     Fax: 1-631-938-8127

 45-1 Ramsey Road, Shirley, NY 11967, USA

shipped out with dry ice/blue ice unless customers require otherwise.

## GENE INFORMATION

**Gene Name** ERCC3 excision repair cross-complementing rodent repair deficiency, complementation group 3 [ Homo sapiens (human) ]

**Official Symbol** ERCC3

**Synonyms** ERCC3; excision repair cross-complementing rodent repair deficiency, complementation group 3; TFIIH basal transcription factor complex helicase XPB subunit; BTF2; GTF2H; RAD25; TFIIH; xeroderma pigmentosum group B complementing; XPB; BTF2 p89; TFIIH p89; TFIIH 89 kDa subunit; DNA excision repair protein ERCC-3; DNA repair protein complementing XP-B cells; basic transcription factor 2 89 kDa subunit; xeroderma pigmentosum, complementation group B; xeroderma pigmentosum group B-complementing protein; TFIIH basal transcription factor complex 89 kDa subunit;

**Gene ID** 2071

**mRNA Refseq** NM\_000122

**Protein Refseq** NP\_000113

**MIM** 133510

**UniProt ID** P19447

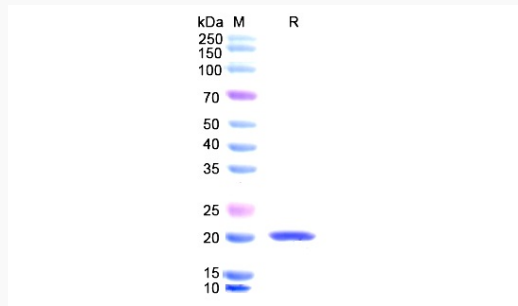
 Tel: 1-631-559-9269 1-516-512-3133

 Email: [info@creative-biomart.com](mailto:info@creative-biomart.com)  Fax: 1-631-938-8127

 45-1 Ramsey Road, Shirley, NY 11967, USA



SDS-PAGE



Tel: 1-631-559-9269 1-516-512-3133

Email: [info@creative-biomart.com](mailto:info@creative-biomart.com) Fax: 1-631-938-8127

45-1 Ramsey Road, Shirley, NY 11967, USA