

Recombinant Full Length Human ERCC4 Protein, C-Flag-tagged

Cat. No. ERCC4-1928HFL **Lot. No.** (See product label)

SPECIFICATION

Product Overview	Recombinant Full Length Human ERCC4 Protein, fused to Flag-tag at C-terminus, was expressed in Mammalian cells.
Species	Human
Source	Mammalian Cells
Description	The protein encoded by this gene forms a complex with ERCC1 and is involved in the 5' incision made during nucleotide excision repair. This complex is a structure specific DNA repair endonuclease that interacts with EME1. Defects in this gene are a cause of xeroderma pigmentosum complementation group F (XP-F), or xeroderma pigmentosum VI (XP6).
Form	25 mM Tris HCl, pH 7.3, 100 mM glycine, 10% glycerol.
Molecular Mass	104.3 kDa
AA Sequence	MESGQPARRIAMAPLLEYERQLVLELLDGLVVCARGLGADRLLYHFLQLHCHPA CLVVLVNTQPAEEE YFINQLKIEGVEHLPRRVNEITSNSRYEVYTQGGVIFATSRILV VDFLTDRIPSDLITGILVYRAHRII ESCQEAFILRLFRQKNKRGFIKAFTDNAVAFDTGF CHVERVMRNLVVRKLYLWPRFHVAVNSFLEQHKPE VVEIHVSMTPTMLAIQTAILDIL NACLKELKCHNPSLEVEDLSLENAIGKPFDKTIRHYLDPLWHQLGAK TKSLVQDLKIL RTLLQYLSQYDCVTFLNLLLESLRATEKAFGQNSGWFLDSSTSMFINARARVYHLPD AK MSKKEKISEKMEIKEGEETKKELVLESNPKWEALTEVLKEIEAENKESEALGGPG

 Tel: 1-631-559-9269 1-516-512-3133

 Email: info@creative-biomart.com  Fax: 1-631-938-8127

 45-1 Ramsey Road, Shirley, NY 11967, USA

QVLICASDDRTCSQL RDYITLGAEAFLLRLYRKTFEKDSKAEVWVMKFRKEDSSKRI
 RKSHKRPKDPQNKERASTKERTLKKKKR KLTLTQMVGKPEELEEEGDVEEGYRREI
 SSSPESCPEEIKHEEFDVNLSSDAAFGILKEPLTIIHPLLGC SDPYALTRVLHEVEPRY
 VVLYDAELTFVRQLEIYRASRPGKPLRVYFLIYGGSTEEQRYLTALRKEKEAF EKLIR
 EKASMVVPEEREGRDETNDLVRGTASADVSTDTRKAGGQEQNGTQQSIVVDMRE
 FRSELP SLIH RRGIDIEPVTLEVGDYILTPEMCVERKSISDLIGSLNNGRLYSQCISMS
 RYYKRPVLLIEFDPSKPFSLT SRGALFQEISSNDISSKLTLLTLHFPRRLRILWCPSPHA
 TAELFEELKQSKPQPDAAALAITADSETLPE SEKYNPGPQDFLLKMPGVNAKNCR
 SLMHHVKNIAELAALSQDELTSILGNAANAKQLYDFIHTSFAEVVS KGKGGK TRTRP
 LEQKLISEEDLAANDILDYKDDDDKV

Purity	> 80% as determined by SDS-PAGE and Coomassie blue staining.
Stability	Stable for 12 months from the date of receipt of the product under proper storage and handling conditions. Avoid repeated freeze-thaw cycles.
Storage	Store at -80 centigrade.
Concentration	>50 ug/mL as determined by microplate BCA method.
Preparation	Recombinant protein was captured through anti-DDK affinity column followed by conventional chromatography steps.
Protein Families	Druggable Genome
Protein Pathways	Nucleotide excision repair
Full Length	Full L.

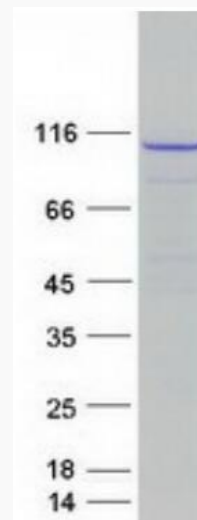
GENE INFORMATION

 Tel: 1-631-559-9269 1-516-512-3133

 Email: info@creative-biomart.com  Fax: 1-631-938-8127

 45-1 Ramsey Road, Shirley, NY 11967, USA

Gene Name	ERCC4 ERCC excision repair 4, endonuclease catalytic subunit [Homo sapiens (human)]
Official Symbol	ERCC4
Synonyms	ERCC11, FANCQ, RAD1, XFEPS, XPF
Gene ID	2072
mRNA Refseq	NM_005236.3
Protein Refseq	NP_005227.1
MIM	133520
UniProt ID	Q92889



Coomassie blue staining of purified ERCC4 protein.

Tel: 1-631-559-9269 1-516-512-3133

Email: info@creative-biomart.com Fax: 1-631-938-8127

45-1 Ramsey Road, Shirley, NY 11967, USA