

Recombinant Human EREG Protein, His-tagged

Cat. No. EREG-001H Lot. No. (See product label)

SPECIFICATION

Product Overview	Recombinant Human EREG Protein, His-tagged, was expressed in HEK293.
Species	Human
Source	HEK293
Protein Length	63-108 aa
Tag	C-His
Molecular Mass	6 kDa
AA Sequence	VSITKCSSDMNGYCLHGQCIYLVDM SQNYCRCEVGYTGVRCEHFFLHHHHHHHH
Purity	>90% by SDS-PAGE
Storage	Store it under sterile conditions at -20 to -80 °C. It is recommended that the protein be aliquoted for optimal storage. Avoid repeated freeze-thaw cycles.
Concentration	0.5mg/ml by BCA
Storage Buffer	Sterile PBS, pH7.4, 10% Glycerol

GENE INFORMATION

 Tel: 1-631-559-9269 1-516-512-3133

 Email: info@creative-biomart.com  Fax: 1-631-938-8127

 45-1 Ramsey Road, Shirley, NY 11967, USA

Gene Name	EREG epiregulin [Homo sapiens (human)]
Official Symbol	EREG
Synonyms	EREG; epiregulin; proepiregulin; ER;
Gene ID	2069
mRNA Refseq	NM_001432
Protein Refseq	NP_001423
MIM	602061
UniProt ID	O14944

Reducing 4%-20%
SDS-PAGE (CBB
stained)



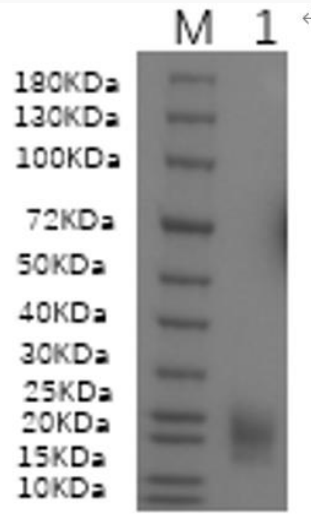
1. EREG-001H
2. BSA

Tel: 1-631-559-9269 1-516-512-3133

Email: info@creative-biomart.com Fax: 1-631-938-8127

45-1 Ramsey Road, Shirley, NY 11967, USA

WB (Anti-His Mouse
Monoclonal
antibody) analysis
profiles of purified
EREG-001H



 Tel: 1-631-559-9269 1-516-512-3133

 Email: info@creative-biomart.com  Fax: 1-631-938-8127

 45-1 Ramsey Road, Shirley, NY 11967, USA