

Recombinant Human EREG protein, His & GST-tagged

Cat. No. EREG-1998H Lot. No. (See product label)

SPECIFICATION

Product Overview	Recombinant Human EREG aa. (Val30~Val169 (Accession # O14944)) fused with N-terminal His & GST tag was produced in E. coli cells.
Species	Human
Source	E.coli
ProteinLength	Val30~Val169
Description	This gene encodes a secreted peptide hormone and member of the epidermal growth factor (EGF) family of proteins. The encoded protein is a ligand of the epidermal growth factor receptor (EGFR) and the structurally related erb-b2 receptor tyrosine kinase 4 (ERBB4). The encoded protein may be involved in a wide range of biological processes including inflammation, wound healing, oocyte maturation, and cell proliferation. Additionally, the encoded protein may promote the progression of cancers of various human tissues.
Form	Freeze-dried powder
Molecular Mass	Predicted Molecular Mass: 48.3kDa
Endotoxin	<1.0EU per 1ug (determined by the LAL method)
Purity	> 95%

 Tel: 1-631-559-9269 1-516-512-3133

 Email: info@creative-biomart.com  Fax: 1-631-938-8127

 45-1 Ramsey Road, Shirley, NY 11967, USA

Characteristic	The isoelectric point is 6.4.
Applications	SDS-PAGE; WB; ELISA; IP.
Stability	The thermal stability is described by the loss rate of the target protein. The loss rate was determined by accelerated thermal degradation test, that is, incubate the protein at 37°C for 48h, and no obvious degradation and precipitation were observed. (Referring from China Biological Products Standard, which was calculated by the Arrhenius equation.) The loss of this protein is less than 5% within the expiration date under appropriate storage condition.
Storage	Avoid repeated freeze/thaw cycles. Store at 2-8°C for one month. Aliquot and store at -80°C for 12 months.
Storage Buffer	Supplied as lyophilized form in PBS, pH7.4, containing 5% sucrose, 0.01% sarcosyl.
Reconstitution	Reconstitute in sterile PBS, pH7.2-pH7.4.

GENE INFORMATION

Gene Name	EREG epiregulin [Homo sapiens (human)]
Official Symbol	EREG
Synonyms	Ptpn13; protein tyrosine phosphatase, non-receptor type 13; RIP; PTPL1; Ptpri; PTP-BL; AI324989; tyrosine-protein phosphatase non-receptor type 13; PTP36; protein tyrosine phosphatase DPZPTP; protein tyrosine phosphatase PTP-BL; protein-tyrosine phosphatase RIP; tyrosine phosphatase
Gene ID	2069

 Tel: 1-631-559-9269 1-516-512-3133

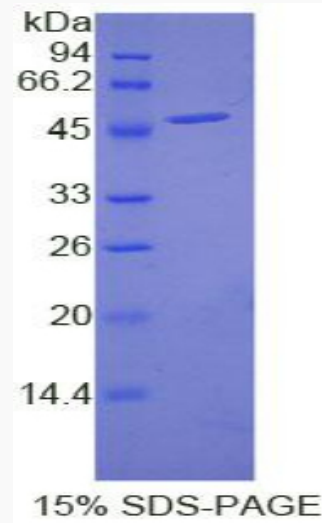
 Email: info@creative-biomart.com  Fax: 1-631-938-8127

 45-1 Ramsey Road, Shirley, NY 11967, USA


mRNA Refseq [NM_001432.2](#)

Protein Refseq [NP_001423.1](#)

UniProt ID [O14944](#)



SDS-PAGE

 Tel: 1-631-559-9269 1-516-512-3133

 Email: info@creative-biomart.com  Fax: 1-631-938-8127

 45-1 Ramsey Road, Shirley, NY 11967, USA