

Active Recombinant Human EREG protein, hFc-tagged

Cat. No. EREG-562H Lot. No. (See product label)

SPECIFICATION

Product Overview	Active Recombinant Human EREG protein(Q61521) (Val 63-Leu 108) was expressed in HEK293, fused with the Fc region of human IgG1 at the N-terminus.
Species	Human
Source	HEK293
ProteinLength	63-108 aa
Form	Lyophilized from sterile PBS, pH 7.4.
Bio-activity	Measured in a cell proliferation assay using Balb/3T3 mouse embryonic fibroblast cells. The ED50 for this effect is typically 2-8 µg/mL.
Molecular Mass	The recombinant human EREG/Fc is a disulfide-linked homodimeric protein. The reduced monomer consists of 306 amino acids and has a predicted molecular mass of 33.8 kDa. In SDS-PAGE under reducing conditions, the apparent molecular mass of rhEREG/Fc monomer is approximately 37 kDa.
Endotoxin	< 1.0 EU per µg of the protein as determined by the LAL method.
Purity	> 95 % as determined by SDS-PAGE
Storage	Store it under sterile conditions at -20°C to -80°C upon receiving. Recommend to aliquot the protein into smaller quantities for optimal storage. Avoid repeated freeze-

 Tel: 1-631-559-9269 1-516-512-3133

 Email: info@creative-biomart.com  Fax: 1-631-938-8127

 45-1 Ramsey Road, Shirley, NY 11967, USA

thaw cycles.

Reconstitution

It is recommended that sterile water be added to the vial to prepare a stock solution of 0.2 ug/ul. Centrifuge the vial at 4°C before opening to recover the entire contents.

GENE INFORMATION

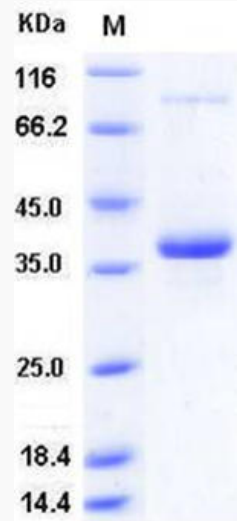
Gene Name	EREG epiregulin [Homo sapiens]
Official Symbol	EREG
Synonyms	EREG; epiregulin; proepiregulin; ER;
Gene ID	2069
mRNA Refseq	NM_001432
Protein Refseq	NP_001423
MIM	602061
UniProt ID	O14944

 Tel: 1-631-559-9269 1-516-512-3133

 Email: info@creative-biomart.com  Fax: 1-631-938-8127

 45-1 Ramsey Road, Shirley, NY 11967, USA

SDS-PAGE



 Tel: 1-631-559-9269 1-516-512-3133

 Email: info@creative-biomart.com  Fax: 1-631-938-8127

 45-1 Ramsey Road, Shirley, NY 11967, USA