

Recombinant Human ERG Protein (1-486 aa), His-tagged

Cat. No. ERG-1389H Lot. No. (See product label)

SPECIFICATION

Product Overview	Recombinant Human ERG Protein (1-486 aa) is produced by Yeast expression system. This protein is fused with a 6xHis tag at the N-terminal. Research Area: Transcription. Protein Description: Full Length.
Species	Human
Source	Yeast
ProteinLength	1-486 aa
Description	Transcriptional regulator. May participate in transcriptional regulation through the recruitment of SETDB1 histone methyltransferase and subsequent modification of local chromatin structure.
Form	Tris-based buffer, 50% glycerol
Molecular Mass	56.6 kDa
AA Sequence	MIQTVDPAAHIKEALSVVSEdqSLFECAYGTPHLAKTEMTASSSSDYGQTSKMSPR VPQQDWLSQPPARVTIKMECNPSQVNGSRNSPDECSVAKGGKMGVSPDVTGMNY GSYMEEKHMPPPNMTTNERVIVPADPTLWSTDHVRQWLEWAVKEYGLPDVNILLF QNIDGKELCKMTKDDFQRLTPSYNADILLSHLHYLRETPHLTSDDVdKALQNSPR LMHARNTGGAAFIFPNTSVYPEATQRITTRPDLPEPPRRSAWTGHGHPTPQSKAA QPSPSTVPKTEDQRPQLDPYQILGPTSSRLANPGSGQIQLWQFLLELLSDSSNSSCI TWEGTNGEFKMTDPDEVARRWGERKSKPNMNYDKLSRALRYYYDKNIMTKVHGK

 Tel: 1-631-559-9269 1-516-512-3133

 Email: info@creative-biomart.com  Fax: 1-631-938-8127

 45-1 Ramsey Road, Shirley, NY 11967, USA

RYAYKDFDFHGIAQALQPHPPPESSLYKYPSDLPYMGSYHAHPQKMNFVAPHPPALPV
TSSSFFAAPNPYWNSPTGGIYPNTRLPTSHMPSHLGTYY

Purity > 90% as determined by SDS-PAGE.

Notes Repeated freezing and thawing is not recommended. Store working aliquots at 4 centigrade for up to one week.

Storage The shelf life is related to many factors, storage state, buffer ingredients, storage temperature and the stability of the protein itself. Generally, the shelf life of liquid form is 6 months at -20 centigrade/-80 centigrade. The shelf life of lyophilized form is 12 months at -20 centigrade/-80 centigrade.

Concentration A hardcopy of COA with reconstitution instruction is sent along with the products.

GENE INFORMATION

Gene Name [ERG v-ets erythroblastosis virus E26 oncogene homolog \(avian\) \[Homo sapiens \]](#)

Official Symbol [ERG](#)

Synonyms ERG; erg 3; p55; ets-related; erg-3;

Gene ID [2078](#)

mRNA Refseq [NM_001136154](#)

Protein Refseq [NP_001129626](#)

MIM [165080](#)

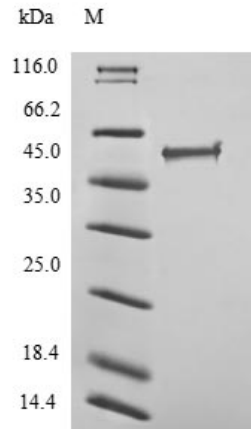
 Tel: 1-631-559-9269 1-516-512-3133

 Email: info@creative-biomart.com  Fax: 1-631-938-8127

 45-1 Ramsey Road, Shirley, NY 11967, USA

UniProt ID

P11308



(Tris-Glycine gel) Discontinuous SDS-PAGE (reduced) with 5% enrichment gel and 15% separation gel.

 Tel: 1-631-559-9269 1-516-512-3133

 Email: info@creative-biomart.com  Fax: 1-631-938-8127

 45-1 Ramsey Road, Shirley, NY 11967, USA