

Recombinant Human ERG protein, His-SUMO-tagged

Cat. No. ERG-226H Lot. No. (See product label)

SPECIFICATION

Product Overview Recombinant Human ERG protein(NP_001129626.1)(1-486aa) was expressed in E. coli with a His tag and SUMO tag at the N-terminal.

Species Human

Source E.coli

ProteinLength 1-486aa

Form If the delivery form is liquid, the default storage buffer is Tris/PBS-based buffer, 5%-50% glycerol.
If the delivery form is lyophilized powder, the buffer before lyophilization is Tris/PBS-based buffer, 6% Trehalose, pH 8.0.

Molecular Mass 70.6kDa

AA Sequence

```
MIQTVDPAAHIKEALSVVSEDQSLFECAYGTPHLAKTEMTASSSSDYGQTSKMSPR
VPQQDWLSQPPARVTIKMECNPSQVNGSRNSPDECSVAKGGKMGVSPDTVGMNY
GSYMEEKHMPPPNMTTNERRVIVPADPTLWSTDHVRQWLEWAVKEYGLPDVNILLF
QNIDGKELCKMTKDDFQRLTPSYNADILLSHLHYLRETPLPHLTSDDVDKALQNSPR
LMHARNTGGAAFIFPNTSVYPEATQRITRDPDLPYEPPRRSAWTGHGHPTPQSKAA
QPSPSTVPKTEDQRPQLDPYQILGPTSSRLANPGSGQIQLWQFLELLSDSSNSSCI
TWEGTNGEFKMTDPDEVARRWGERKSKPNMNYDKLSRALRYYYDKNIMTKVHGK
RYAYKFDHFHIAQALQPHPESSLYKYPDLPYMGSYHAHPQKMNFVAPHPPALPV
TSSSFFAAPNPYWNSPTGGIYPNTRLPTSHMPSHLGTYY
```

 Tel: 1-631-559-9269 1-516-512-3133

 Email: info@creative-biomart.com  Fax: 1-631-938-8127

 45-1 Ramsey Road, Shirley, NY 11967, USA

Purity	Greater than 90% as determined by SDS-PAGE.
Notes	Repeated freezing and thawing is not recommended. Store working aliquots at 4°C for up to one week.
Storage	Store at -20°C upon receipt, aliquoting is necessary for multiple use. Avoid repeated freeze-thaw cycles.
Reconstitution	We recommend that this vial be briefly centrifuged prior to opening to bring the contents to the bottom. Please reconstitute protein in deionized sterile water to a concentration of 0.1-1.0 mg/mL. We recommend to add 5-50% of glycerol (final concentration) and aliquot for long-term storage at -20°C/-80°C. Our default final concentration of glycerol is 50%. Customers could use it as reference.

GENE INFORMATION

Gene Name	ERG
Official Symbol	ERG
Synonyms	Avian erythroblastosis virus E-26 (v-ets) oncogene related; D030036I24Rik; Erg 3; Erg; ERG/EWS fusion gene; included; ERG/FUS fusion gene; included; ERG/TMPSSR2 fusion gene; included; ERG_HUMAN; ERG1; included; ERG2; included; ets related; ETS-related gene; KCNH2; Oncogene ERG; p55; TMPRSS2/ERG fusion; transcriptional regulator ERG (transforming protein ERG); Transcriptional regulator ERG; Transforming protein ERG; v ets avian erythroblastosis virus E26 oncogene; v ets avian erythroblastosis virus E26 oncogene related; v ets erythroblastosis virus E26 oncogene homolog; v ets erythroblastosis virus E26 oncogene like; v ets erythroblastosis virus E26 oncogene like isoform 2; v-ets erythroblastosis virus E26 oncogene; v-ets erythroblastosis virus E26 oncogene

 Tel: 1-631-559-9269 1-516-512-3133

 Email: info@creative-biomart.com  Fax: 1-631-938-8127

 45-1 Ramsey Road, Shirley, NY 11967, USA

homolog (avian); V-ets erythroblastosis virus E26 oncogene like (Avian); isoform CRA_e

Gene ID

2078

mRNA Refseq

NM_001136154.1

Protein Refseq


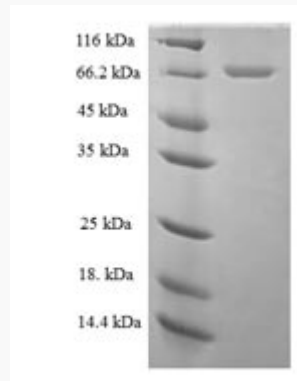

NP_001129626.1

MIM

165080

UniProt ID

P11308

SDS-PAGE of ERG-226H Tel: 1-631-559-9269 1-516-512-3133 Email: info@creative-biomart.com  Fax: 1-631-938-8127 45-1 Ramsey Road, Shirley, NY 11967, USA