

Recombinant Human ERG Protein, Myc/DDK-tagged, C13 and N15-labeled

Cat. No. ERG-5697H Lot. No. (See product label)

SPECIFICATION

Product Overview	ERG MS Standard C13 and N15-labeled recombinant protein (NP_004440) with a C-terminal MYC/DDK tag, was expressed in HEK293 cells.
Species	Human
Source	HEK293
Description	<p>This gene encodes a member of the erythroblast transformation-specific (ETS) family of transcriptions factors. All members of this family are key regulators of embryonic development, cell proliferation, differentiation, angiogenesis, inflammation, and apoptosis. The protein encoded by this gene is mainly expressed in the nucleus. It contains an ETS DNA-binding domain and a PNT (pointed) domain which is implicated in the self-association of chimeric oncoproteins. This protein is required for platelet adhesion to the subendothelium, inducing vascular cell remodeling. It also regulates hematopoiesis, and the differentiation and maturation of megakaryocytic cells. This gene is involved in chromosomal translocations, resulting in different fusion gene products, such as TMPSSR2-ERG and NDRG1-ERG in prostate cancer, EWS-ERG in Ewing's sarcoma and FUS-ERG in acute myeloid leukemia. More than two dozens of transcript variants generated from combinatorial usage of three alternative promoters and multiple alternative splicing events have been reported, but the full-length nature of many of these variants has not been determined.</p>
Molecular Mass	51.9 kDa

 Tel: 1-631-559-9269 1-516-512-3133

 Email: info@creative-biomart.com  Fax: 1-631-938-8127

 45-1 Ramsey Road, Shirley, NY 11967, USA

AA Sequence

MIQTVDPAAHIKEALSVVSEDQSLFECAYGTPHLAKTEMTASSSSDYGQTSKMSPR
 VPQQDWLSQPPARVTIKMECNPSQVNGSRNSPDECSVAKGGKMGVSPDTVGMNY
 GSYMEEKHMPPPNMTTNERVIVPADPTLWSTDHVRQWLEWAVKEYGLPDVNILLF
 QNIDGKELCKMTKDDFQRLTPSYNADILLSHLHYLRETPLPHLTSDDVDKALQNSPR
 LMHARNTDLPYEPPRRSAWTGHGHPTPQSKAAQPSPSTVPKTEDQRPQLDPYQIL
 GPTSSRLANPGSGQIQLWQFLLELLSDSSNSSCITWEGTNGEFKMTDPDEVARRW
 GERKSKPNMNYDKLSRALRYYYDKNIMTKVHGKRYAYKDFDFHGIAQALQPHPESS
 LYKYPDLPYMGSYHAHPQKMNFMVAPHPPALPVTSSSFFAAPNPYWNSPTGGIYPN
 TRLPTSHMPSHLGTYYSGPTRRRLEQKLISEEDLAANDILDYKDDDDKV

Purity > 80% as determined by SDS-PAGE and Coomassie blue staining

Stability Stable for 3 months from receipt of products under proper storage and handling conditions.

Storage Store at -80 centigrade. Avoid repeated freeze-thaw cycles.

Concentration 50 µg/mL as determined by BCA

Storage Buffer 100 mM glycine, 25 mM Tris-HCl, pH 7.3.

GENE INFORMATION

Gene Name ERG ETS transcription factor ERG [Homo sapiens (human)]

Official Symbol ERG

Synonyms ERG; v-ets erythroblastosis virus E26 oncogene homolog (avian); v ets avian erythroblastosis virus E26 oncogene related, v ets erythroblastosis virus E26 oncogene like (avian); transcriptional regulator ERG; erg 3; p55; TMPRSS2 ERG prostate cancer specific; transcriptional regulator ERG (transforming protein ERG); v

 Tel: 1-631-559-9269 1-516-512-3133

 Email: info@creative-biomart.com  Fax: 1-631-938-8127

 45-1 Ramsey Road, Shirley, NY 11967, USA

ets avian erythroblastosis virus E26 oncogene related; v ets erythroblastosis virus E26 oncogene like; ets-related; TMPRSS2/ERG fusion; v-ets erythroblastosis virus E26 oncogene like; v-ets avian erythroblastosis virus E26 oncogene related; erg-3;

Gene ID 2078

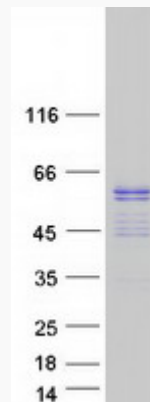
mRNA Refseq NM_004449

Protein Refseq NP_004440

MIM 165080

UniProt ID P11308

SDS-PAGE



 Tel: 1-631-559-9269 1-516-512-3133

 Email: info@creative-biomart.com  Fax: 1-631-938-8127

 45-1 Ramsey Road, Shirley, NY 11967, USA