

Recombinant Human ERH Protein, Myc/DDK-tagged, C13 and N15-labeled

Cat. No. ERH-2364H Lot. No. (See product label)

SPECIFICATION

Product Overview	ERH MS Standard C13 and N15-labeled recombinant protein (NP_004441) with a C-terminal MYC/DDK tag, was expressed in HEK293 cells.
Species	Human
Source	HEK293
Description	May have a role in the cell cycle.
Molecular Mass	12.3 kDa
AA Sequence	MSHTILLVQPTKRPEGRTYADYESVNECMEGVCKMYEEHLKRMNPNSPSITYDISQL FDFIDDLADLSCLVYRADTQTYQPYNKDWIKEKIYVLLRRQAQQAGKTRTRPLEQKLI SEEDLAANDILDYKDDDDKV
Purity	> 80% as determined by SDS-PAGE and Coomassie blue staining
Stability	Stable for 3 months from receipt of products under proper storage and handling conditions.
Storage	Store at -80 centigrade. Avoid repeated freeze-thaw cycles.
Concentration	50 µg/mL as determined by BCA

 Tel: 1-631-559-9269 1-516-512-3133

 Email: info@creative-biomart.com  Fax: 1-631-938-8127

 45-1 Ramsey Road, Shirley, NY 11967, USA

Storage Buffer 100 mM glycine, 25 mM Tris-HCl, pH 7.3.

GENE INFORMATION

Gene Name ERH ERH mRNA splicing and mitosis factor [Homo sapiens (human)]

Official Symbol ERH

Synonyms ERH; enhancer of rudimentary homolog (Drosophila); enhancer of rudimentary (Drosophila) homolog; enhancer of rudimentary homolog; DROER; FLJ27340;

Gene ID 2079

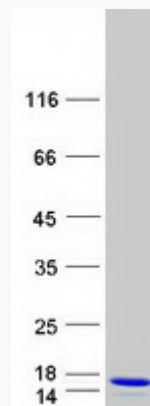
mRNA Refseq NM_004450

Protein Refseq NP_004441

MIM 601191

UniProt ID P84090

SDS-PAGE



 Tel: 1-631-559-9269 1-516-512-3133

 Email: info@creative-biomart.com  Fax: 1-631-938-8127

 45-1 Ramsey Road, Shirley, NY 11967, USA