

Recombinant Human ERH Protein, GST-tagged

Cat. No. ERH-3476H **Lot. No.** (See product label)

SPECIFICATION

Product Overview	Human ERH full-length ORF (AAH14301, 1 a.a. - 104 a.a.) recombinant protein with GST-tag at N-terminal.
Species	Human
Source	Wheat Germ
Description	ERH (Enhancer Of Rudimentary Homolog (Drosophila)) is a Protein Coding gene. GO annotations related to this gene include poly(A) RNA binding.
Molecular Mass	37.18 kDa
AA Sequence	MSHTILLVQPTKRPEGRTYADYESVNECMEGVCKMYEEHLKRMNPNSPSITYDISQL FDFIDDLADLSCLVYRADTQTYQPYNKDWIKEKIYVLLRRQAQQAGK
Applications	Enzyme-linked Immunoabsorbent Assay Western Blot (Recombinant protein) Antibody Production Protein Array
Notes	Best use within three months from the date of receipt of this protein.
Storage	Store at -80 centigrade. Aliquot to avoid repeated freezing and thawing.
Storage Buffer	50 mM Tris-HCl, 10 mM reduced Glutathione, pH=8.0 in the elution buffer.

 Tel: 1-631-559-9269 1-516-512-3133

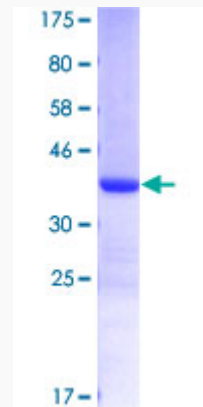
 Email: info@creative-biomart.com  Fax: 1-631-938-8127

 45-1 Ramsey Road, Shirley, NY 11967, USA

GENE INFORMATION

Gene Name	ERH enhancer of rudimentary homolog (Drosophila) [Homo sapiens]
Official Symbol	ERH
Synonyms	ERH; enhancer of rudimentary homolog (Drosophila); enhancer of rudimentary (Drosophila) homolog; enhancer of rudimentary homolog; DROER; FLJ27340;
Gene ID	2079
mRNA Refseq	NM_004450
Protein Refseq	NP_004441
MIM	601191
UniProt ID	P84090

Quality Control Testing



12.5% SDS-PAGE Stained with Coomassie Blue.

 Tel: 1-631-559-9269 1-516-512-3133

 Email: info@creative-biomart.com  Fax: 1-631-938-8127

 45-1 Ramsey Road, Shirley, NY 11967, USA