

Recombinant Human ERLIN2 Protein, GST-tagged

Cat. No. ERLIN2-3479H Lot. No. (See product label)

SPECIFICATION

Product Overview	Human ERLIN2 full-length ORF (NP_009106.1, 1 a.a. - 339 a.a.) recombinant protein with GST-tag at N-terminal.
Species	Human
Source	Wheat Germ
Description	This gene encodes a member of the SPFH domain-containing family of lipid raft-associated proteins. The encoded protein is localized to lipid rafts of the endoplasmic reticulum and plays a critical role in inositol 1,4,5-trisphosphate (IP3) signaling by mediating ER-associated degradation of activated IP3 receptors. Mutations in this gene are a cause of spastic paraplegia-18 (SPG18). Alternatively spliced transcript variants encoding multiple isoforms have been observed for this gene. [provided by RefSeq, Feb 2012]
Molecular Mass	64.2 kDa
AA Sequence	MAQLGAVVAVASSFFCASLFSVHKIEEGHIGVYYRGGALLTSTSGPGFHLMLPFITS YKSVQTTLTQDEVKNVPCGTSGGVMYFDRIEVNFLVNAVYDIVKNYTADYDKALI FNKIHHELNQFCSVHTLQEVYIELFDQIDENLKLALQQDLTSMAPGLVIQAVRVTKPNI PEAIRRNYELMESEKTKLLIAAQKQKVVEKEAETERKKALIEAEKVAQVAEITYGQKV MEKETEEKKISEIEDAAFLAREKAKADAECYTAMKIAEANKLKLTPEYLQLMKYKAIASN SKIYFGKDIPNMFMDMSAGSVSKQFEGGLADKLSFGLEDEPLETATKEN
Applications	Enzyme-linked Immunoabsorbent Assay

 Tel: 1-631-559-9269 1-516-512-3133

 Email: info@creative-biomart.com  Fax: 1-631-938-8127

 45-1 Ramsey Road, Shirley, NY 11967, USA

Western Blot (Recombinant protein)
 Antibody Production
 Protein Array

Notes Best use within three months from the date of receipt of this protein.

Storage Store at -80 centigrade. Aliquot to avoid repeated freezing and thawing.

Storage Buffer 50 mM Tris-HCl, 10 mM reduced Glutathione, pH=8.0 in the elution buffer.

GENE INFORMATION

Gene Name [ERLIN2 ER lipid raft associated 2 \[Homo sapiens \]](#)

Official Symbol [ERLIN2](#)

Synonyms ERLIN2; ER lipid raft associated 2; C8orf2, chromosome 8 open reading frame 2 , Erlin 2, SPFH domain family, member 2 , SPFH2; erlin-2; NET32; SPFH domain family, member 2; endoplasmic reticulum lipid raft-associated protein 2; stomatin-prohibitin-flotillin-HflC/K domain-containing protein 2; SPFH2; SPG18; C8orf2; Erlin-2; MGC87072;

Gene ID [11160](#)

mRNA Refseq [NM_001003790](#)

Protein Refseq [NP_001003790](#)

MIM [611605](#)

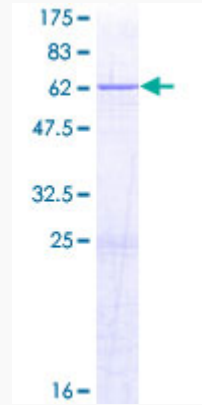
UniProt ID [O94905](#)

 Tel: 1-631-559-9269 1-516-512-3133

 Email: info@creative-biomart.com  Fax: 1-631-938-8127

 45-1 Ramsey Road, Shirley, NY 11967, USA

**Quality Control
Testing**



12.5% SDS-PAGE Stained with Coomassie Blue.

 Tel: 1-631-559-9269 1-516-512-3133

 Email: info@creative-biomart.com  Fax: 1-631-938-8127

 45-1 Ramsey Road, Shirley, NY 11967, USA