

Recombinant Human ERMP1 Protein, GST-tagged

Cat. No. ERMP1-3482H Lot. No. (See product label)

SPECIFICATION

Product Overview	Human ERMP1 full-length ORF (AAH31630.1, 1 a.a. - 317 a.a.) recombinant protein with GST-tag at N-terminal.
Species	Human
Source	Wheat Germ
Description	ERMP1 (Endoplasmic Reticulum Metallopeptidase 1) is a Protein Coding gene. GO annotations related to this gene include hydrolase activity and metallopeptidase activity.
Molecular Mass	62.4 kDa
AA Sequence	MFIPYLYALYLIWAVFEMFTPILGRSGSEIPPDVVLASILAGCTMILSSYFINFIYLAKST KKTMLTLTLVCAITFLLVCSGTFPPYSSNPANPKPKRVFLQHMTRTFHDLEGNVAVKR DSGIWINGFDYTGISHITPHIPEINDSIRAHCEENAPLCGFPWYLPVHFLIRKNWYLP PEVSPRNPPHFRLISKEQTPWDSIKLTFEATGPSHMSFYVRAHKGSTLSQWVSLGNG TPVTSKGGDYVFYSHGLQASAWQFWIEVQVSEEHPEGMVTVAIAAHYLSGEDKRS PQLDALKEKFPDWTFFPSAWVCTYDLFVF
Applications	Enzyme-linked Immunoabsorbent Assay Western Blot (Recombinant protein) Antibody Production Protein Array

 Tel: 1-631-559-9269 1-516-512-3133

 Email: info@creative-biomart.com  Fax: 1-631-938-8127

 45-1 Ramsey Road, Shirley, NY 11967, USA

Notes	Best use within three months from the date of receipt of this protein.
Storage	Store at -80 centigrade. Aliquot to avoid repeated freezing and thawing.
Storage Buffer	50 mM Tris-HCl, 10 mM reduced Glutathione, pH=8.0 in the elution buffer.

GENE INFORMATION

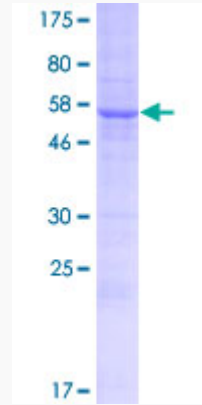
Gene Name	ERMP1 endoplasmic reticulum metalloproteinase 1 [Homo sapiens]
Official Symbol	ERMP1
Synonyms	endoplasmic reticulum metalloproteinase 1; 23703; Ensembl:ENSG00000099219; KIAA1815; endoplasmic reticulum metalloproteinase 1; Felix-ina; aminopeptidase Fxna; bA207C16.3 (novel protein similar to predicted yeast, plant and worm proteins); FXNA; KIAA1815; bA207C16.3
Gene ID	79956
mRNA Refseq	NM_024896
Protein Refseq	NP_079172
MIM	611156
UniProt ID	B3KSB1

 Tel: 1-631-559-9269 1-516-512-3133

 Email: info@creative-biomart.com  Fax: 1-631-938-8127

 45-1 Ramsey Road, Shirley, NY 11967, USA

**Quality Control
Testing**



12.5% SDS-PAGE Stained with Coomassie Blue.

 Tel: 1-631-559-9269 1-516-512-3133

 Email: info@creative-biomart.com  Fax: 1-631-938-8127

 45-1 Ramsey Road, Shirley, NY 11967, USA