

Recombinant Human ERMP1 protein, His-tagged

Cat. No. ERMP1-7432H Lot. No. (See product label)

SPECIFICATION

Product Overview	Recombinant Human ERMP1 protein(Q7Z2K6)(85-399aa), fused with C-terminal His tag, was expressed in E.coli.
Species	Human
Source	E.coli
ProteinLength	85-399a.a.
Tag	His
Form	If the delivery form is liquid, the default storage buffer is Tris/PBS-based buffer, 5%-50% glycerol. If the delivery form is lyophilized powder, the buffer before lyophilization is Tris/PBS-based buffer, 6% Trehalose, pH 8.0.
Molecular Mass	41.4 kDa
Purity	Greater than 90% as determined by SDS-PAGE.
Storage	Store at -20°C/-80°C upon receipt, aliquoting is necessary for mutiple use. Avoid repeated freeze-thaw cycles.
Reconstitution	We recommend that this vial be briefly centrifuged prior to opening to bring the contents to the bottom. Please reconstitute protein in deionized sterile water to a concentration of 0.1-1.0 mg/mL.We recommend to add 5-50% of glycerol (final

 Tel: 1-631-559-9269 1-516-512-3133

 Email: info@creative-biomart.com  Fax: 1-631-938-8127

 45-1 Ramsey Road, Shirley, NY 11967, USA

concentration) and aliquot for long-term storage at -20°C/-80°C.

AA Sequence

RTLVLQSLQQLVLRGAAGHRGEFDALQARDYLEHITSIGPRTTGSPENEILTVHYLLE
 QIKLIEVQSNLSLHKISVDVQRPTGSFSDIFLGGFTSYDNTNVVVKLEPRDGAQHAVL
 ANCHFDSVANSPGASDDAVSCSVMLEVLRLVSTSSSEALHHAVIFLFGAEENVLQAS
 HGFITQHPWASLIRAFINLEAAGVGGKELVFQTGPENPWLQAYVSAAKHPFASVVA
 QEVFQSGIIPSDTDFRIYRDFGNIPGIDLAFIENGYIYHTKYDTADRILTDSIQRAGDNIL
 AVLKHLATSDMLAAASKYRHGNM

GENE INFORMATION

Gene Name [ERMP1 endoplasmic reticulum metallopeptidase 1 \[Homo sapiens \]](#)

Official Symbol [ERMP1](#)

Synonyms endoplasmic reticulum metallopeptidase 1; 23703; Ensembl:ENSG00000099219; KIAA1815; endoplasmic reticulum metallopeptidase 1;Felix-ina;aminopeptidase Fxna;bA207C16.3 (novel protein similar to predicted yeast, plant and worm proteins); FXNA; KIAA1815; bA207C16.3

Gene ID [79956](#)

mRNA Refseq [NM_024896.2](#)

Protein Refseq [NP_079172.2](#)

MIM [611156](#)

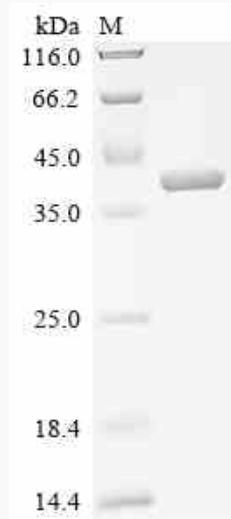
UniProt ID [B3KSB1](#)

 Tel: 1-631-559-9269 1-516-512-3133

 Email: info@creative-biomart.com  Fax: 1-631-938-8127

 45-1 Ramsey Road, Shirley, NY 11967, USA

SDS-PAGE



 Tel: 1-631-559-9269 1-516-512-3133

 Email: info@creative-biomart.com  Fax: 1-631-938-8127

 45-1 Ramsey Road, Shirley, NY 11967, USA