

Recombinant Human ERN2 protein, GST-tagged

Cat. No. ERN2-6754H Lot. No. (See product label)

SPECIFICATION

Product Overview	Recombinant Human ERN2 protein(452-563 aa), fused with N-terminal GST tag, was expressed in E.coli.
Species	Human
Source	E.coli
ProteinLength	452-563 aa
Form	The purified protein was lyophilized from sterile phosphate-buffered saline (PBS: 58 mM Na ₂ HPO ₄ , 17 mM NaH ₂ PO ₄ , 68 mM NaCl, pH 8.0). Prior to lyophilization, 5% (w/v) trehalose and 5% (w/v) mannitol were incorporated as cryoprotective excipients. The protein was eluted with a buffer containing 100 mM reduced glutathione (GSH).
AASequence	SLSREKLWDSELHPEEKTPDSYLGLGPQDLLAASLTAVLLGGWILFVMRQQQPQVV EKQKETPLAPADFAHISQDAQSLHSGASRRSQKRLQSPSKQAQPLDDPEAEQLTVV
Purity	85%, by SDS-PAGE with Coomassie Brilliant Blue staining.
Storage	Store at 2-8°C for 1-2 weeks. Aliquot and store at -20°C to -80°C for up to 3 months, reconstitution with sterile water and addition of an equal volume of glycerol. Avoid repeat freeze-thaw cycles.
Reconstitution	Dissolve the product in 200

 Tel: 1-631-559-9269 1-516-512-3133

 Email: info@creative-biomart.com  Fax: 1-631-938-8127

 45-1 Ramsey Road, Shirley, NY 11967, USA

µl sterile water to achieve a working concentration of 0.25 g/µl. If experimental compatibility allows, mix the aqueous solution with an equal volume of glycerol (1:1 ratio) after initial reconstitution.

GENE INFORMATION

Gene Name	ERN2 endoplasmic reticulum to nucleus signaling 2 [Homo sapiens]
Official Symbol	ERN2
Synonyms	ERN2; endoplasmic reticulum to nucleus signaling 2; ER to nucleus signalling 2; serine/threonine-protein kinase/endoribonuclease IRE2; IRE1b; hIRE2p; IRE1 beta; inositol-requiring 1 beta; inositol-requiring protein 2; IRE1, S. cerevisiae, homolog of; endoplasmic reticulum-to-nucleus signaling 2; endoplasmic reticulum to nucleus signalling 2; IRE1-BETA;
Gene ID	10595
mRNA Refseq	NM_033266
Protein Refseq	NP_150296
MIM	604034
UniProt ID	Q76MJ5

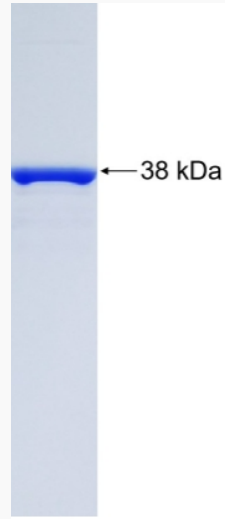
 Tel: 1-631-559-9269 1-516-512-3133

 Email: info@creative-biomart.com  Fax: 1-631-938-8127

 45-1 Ramsey Road, Shirley, NY 11967, USA



SDS-PAGE



☎ Tel: 1-631-559-9269 1-516-512-3133

☎ Email: info@creative-biomart.com ☎ Fax: 1-631-938-8127

☎ 45-1 Ramsey Road, Shirley, NY 11967, USA