

## Recombinant Human ERP44 Protein, His&GST-tagged

Cat. No. ERP44-1442H Lot. No. (See product label)

### SPECIFICATION

|                         |   |
|-------------------------|---|
| <b>Product Overview</b> | Recombinant Human ERP44 Protein (Met1-Gln286) with N-His&GST tag was expressed in E. coli.  |
| <b>Species</b>          | Human   |
| <b>Source</b>           | E.coli  |
| <b>ProteinLength</b>    | Met1-Gln286   |
| <b>Description</b>      | This gene encodes a member of the protein disulfide isomerase (PDI) family of endoplasmic reticulum (ER) proteins. It has an inferred N-terminal signal peptide, a catalytically active thioredoxin (TRX) domain, two TRX-like domains and a C-terminal ER-retention sequence. This protein functions as a pH-regulated chaperone of the secretory pathway and likely plays a role in protein quality control at the endoplasmic reticulum - Golgi interface. |
| <b>Form</b>             | Freeze-dried powder   |
| <b>Molecular Mass</b>   | Predicted Molecular Mass: 63.3 kDa<br>Accurate Molecular Mass: 63 kDa   |
| <b>Purity</b>           | > 90%   |
| <b>Applications</b>     | Positive Control; Immunogen; SDS-PAGE; WB.  |

 Tel: 1-631-559-9269 1-516-512-3133

 Email: [info@creative-biomart.com](mailto:info@creative-biomart.com)  Fax: 1-631-938-8127

 45-1 Ramsey Road, Shirley, NY 11967, USA

|                       |  |
|-----------------------|--|
| <b>Stability</b>      | The thermal stability is described by the loss rate. The loss rate was determined by accelerated thermal degradation test, that is, incubate the protein at 37 centigrade for 48h, and no obvious degradation and precipitation were observed. The loss rate is less than 5% within the expiration date under appropriate storage condition. |
| <b>Storage</b>        | Avoid repeated freeze/thaw cycles. Store at 2-8 centigrade for one month. Aliquot and store at -80 centigrade for 12 months.   |
| <b>Storage Buffer</b> | 20mM Tris, 150mM NaCl, pH8.0, containing 1mM EDTA, 1mM DTT, 0.01% SKL, 5% Trehalose and Proclin300.  |
| <b>Reconstitution</b> | Reconstitute in 20mM Tris, 150mM NaCl (pH8.0) to a concentration of 0.1-1.0 mg/mL. Do not vortex.  |

## GENE INFORMATION

|                        |  |
|------------------------|--|
| <b>Gene Name</b>       | ERP44 endoplasmic reticulum protein 44 [ Homo sapiens (human) ]  |
| <b>Official Symbol</b> | ERP44  |
| <b>Synonyms</b>        | ERP44; endoplasmic reticulum protein 44; thioredoxin domain containing 4 (endoplasmic reticulum), TXNDC4; endoplasmic reticulum resident protein 44; KIAA0573; PDIA10; protein disulfide isomerase family A; member 10; ER protein 44; thioredoxin domain-containing protein 4; endoplasmic reticulum resident protein 44 kDa; protein disulfide isomerase family A, member 10; thioredoxin domain containing 4 (endoplasmic reticulum); TXNDC4; |
| <b>Gene ID</b>         | 23071  |
| <b>mRNA Refseq</b>     | NM_015051  |

 Tel: 1-631-559-9269 1-516-512-3133

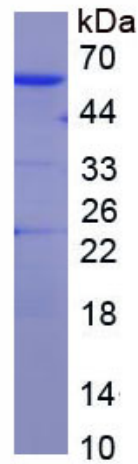
 Email: [info@creative-biomart.com](mailto:info@creative-biomart.com)  Fax: 1-631-938-8127

 45-1 Ramsey Road, Shirley, NY 11967, USA

**Protein Refseq** NP\_055866

**MIM** 609170

**UniProt ID** Q9BS26



 Tel: 1-631-559-9269 1-516-512-3133

 Email: [info@creative-biomart.com](mailto:info@creative-biomart.com)  Fax: 1-631-938-8127

 45-1 Ramsey Road, Shirley, NY 11967, USA