

## Recombinant Human ESAM protein, hFc-tagged

Cat. No. ESAM-2328H Lot. No. (See product label)

### SPECIFICATION

<b>Product Overview</b>	Recombinant Human ESAM protein(Met 1-Ala 248) of human ESAM (NP_620411.2) precursor was expressed in HEK293 with the fused Fc region of human IgG1 at the C-terminus.
<b>Species</b>	Human
<b>Source</b>	HEK293
<b>ProteinLength</b>	1-248 aa
<b>Form</b>	Lyophilized from sterile 100mM Glycine, 10mM NaCl, 50mM Tris, pH 7.5.
<b>Molecular Mass</b>	The recombinant human ESAM/Fc is a disulfide-linked homodimeric protein. The reduced monomer consists of 457 amino acids and predicts a molecular mass of 50.5 kDa. By SDS-PAGE under reducing conditions, the apparent molecular mass of rh ESAM/Fc monomer is approximately 65-70 kDa due to glycosylation.
<b>Endotoxin</b>	< 1.0 EU per µg of the protein as determined by the LAL method.
<b>Purity</b>	> 97 % as determined by SDS-PAGE
<b>Storage</b>	Store it under sterile conditions at -20°C to -80°C upon receiving. Recommend to aliquot the protein into smaller quantities for optimal storage. Avoid repeated freeze-thaw cycles.

 Tel: 1-631-559-9269 1-516-512-3133

 Email: [info@creative-biomart.com](mailto:info@creative-biomart.com)  Fax: 1-631-938-8127

 45-1 Ramsey Road, Shirley, NY 11967, USA

**Reconstitution** It is recommended that sterile water be added to the vial to prepare a stock solution of 0.2 ug/ul. Centrifuge the vial at 4°C before opening to recover the entire contents.

## GENE INFORMATION

**Gene Name** ESAM endothelial cell adhesion molecule [ Homo sapiens ]

**Official Symbol** ESAM

**Synonyms** ESAM; endothelial cell adhesion molecule; endothelial cell-selective adhesion molecule; W117m; 2310008D05Rik; LP4791 protein; HUEL (C4orf1)-interacting protein;

**Gene ID** 90952

**mRNA Refseq** NM\_138961

**Protein Refseq** NP\_620411

**MIM** 614281

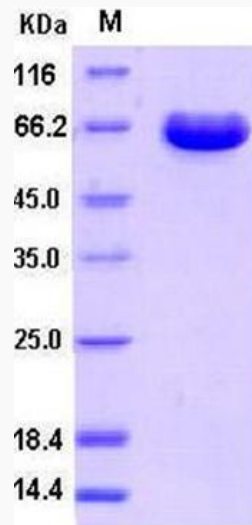
**UniProt ID** Q96AP7

 Tel: 1-631-559-9269 1-516-512-3133

 Email: [info@creative-biomart.com](mailto:info@creative-biomart.com)  Fax: 1-631-938-8127

 45-1 Ramsey Road, Shirley, NY 11967, USA

**SDS-PAGE**



 Tel: 1-631-559-9269 1-516-512-3133

 Email: [info@creative-biomart.com](mailto:info@creative-biomart.com)  Fax: 1-631-938-8127

 45-1 Ramsey Road, Shirley, NY 11967, USA