

## Recombinant Human ESAM Protein, GST-tagged

Cat. No. ESAM-3494H Lot. No. (See product label)

### SPECIFICATION

<b>Product Overview</b>	Human ESAM full-length ORF ( AAH16868, 1 a.a. - 390 a.a.) recombinant protein with GST-tag at N-terminal.
<b>Species</b>	Human
<b>Source</b>	Wheat Germ
<b>Description</b>	ESAM (Endothelial Cell Adhesion Molecule) is a Protein Coding gene. Among its related pathways are Blood-Brain Barrier and Immune Cell Transmigration: VCAM-1/CD106 Signaling Pathways and Integrin Pathway. An important paralog of this gene is IGSF11.
<b>Molecular Mass</b>	68.64 kDa
<b>AA Sequence</b>	MISLPGPLVTNLLRFLFLGLSALAPPSRAQLQLHLPANRLQAVEGGEVVLPAWYTLH GEVSSSQPWEVPPFVMWFFKQKEKEDQVLSYINGVTTSKPGVSLVYSMPSRNLSLRL EGLQEKDSGPYSCSVNVQDKQGKSRGHSIKTLELNVLPAPPSCRLQGVPVHGA NVTLSQCSPRSKPAVQYQWDRQLPSFQTFAPALDVIRGSLSLTNLSSSMAGVYVC KAHNEVGTAQCNVTLEVSTGPGAADVAVVGTLVGLGLLAGLVLLYHRRGKALEE PANDIKEDAIAPRTLWPWKSSDTISKNGTLSSVTSARALRPPHGPPRPGALTPTPSLS SQALPSPRLPTTDGAHPQPISPIPGGVSSSGLSRMGAVPVMVPAQSQAGSLV
<b>Applications</b>	Enzyme-linked Immunoabsorbent Assay Western Blot (Recombinant protein) Antibody Production

 Tel: 1-631-559-9269 1-516-512-3133

 Email: [info@creative-biomart.com](mailto:info@creative-biomart.com)  Fax: 1-631-938-8127

 45-1 Ramsey Road, Shirley, NY 11967, USA

**Protein Array**

<b>Notes</b>	Best use within three months from the date of receipt of this protein.
<b>Storage</b>	Store at -80 centigrade. Aliquot to avoid repeated freezing and thawing.
<b>Storage Buffer</b>	50 mM Tris-HCl, 10 mM reduced Glutathione, pH=8.0 in the elution buffer.

**GENE INFORMATION**

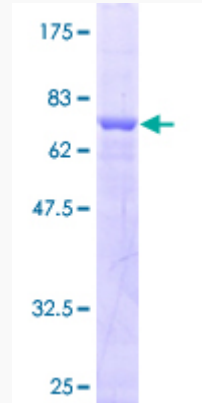
<b>Gene Name</b>	ESAM endothelial cell adhesion molecule [ Homo sapiens ]
<b>Official Symbol</b>	ESAM
<b>Synonyms</b>	ESAM; endothelial cell adhesion molecule; endothelial cell-selective adhesion molecule; W117m; 2310008D05Rik; LP4791 protein; HUEL (C4orf1)-interacting protein;
<b>Gene ID</b>	90952
<b>mRNA Refseq</b>	NM_138961
<b>Protein Refseq</b>	NP_620411
<b>MIM</b>	614281
<b>UniProt ID</b>	Q96AP7

 Tel: 1-631-559-9269 1-516-512-3133

 Email: [info@creative-biomart.com](mailto:info@creative-biomart.com)  Fax: 1-631-938-8127

 45-1 Ramsey Road, Shirley, NY 11967, USA

**Quality Control  
Testing**



12.5% SDS-PAGE Stained with Coomassie Blue.

 Tel: 1-631-559-9269 1-516-512-3133

 Email: [info@creative-biomart.com](mailto:info@creative-biomart.com)  Fax: 1-631-938-8127

 45-1 Ramsey Road, Shirley, NY 11967, USA