

## Recombinant Human ESCO2 Protein, GST-tagged

Cat. No. ESCO2-3497H Lot. No. (See product label)

### SPECIFICATION

<b>Product Overview</b>	Human ESCO2 full-length ORF ( AAI46563.1, 1 a.a. - 601 a.a.) recombinant protein with GST-tag at N-terminal.
<b>Species</b>	Human
<b>Source</b>	Wheat Germ
<b>Description</b>	This gene encodes a protein that may have acetyltransferase activity and may be required for the establishment of sister chromatid cohesion during the S phase of mitosis. Mutations in this gene have been associated with Roberts syndrome. [provided by RefSeq, Jul 2008]
<b>Molecular Mass</b>	93.06 kDa
<b>AA Sequence</b>	<p>MAALTPRKRKQDSLKCDSELLHFTENLFPSPNKKHCFYQNSDKNEENLHCSQQEHFV            LSALKTTEINRLPSANQGSPFKSALSTVSFYQNKWYLNPLERKLIKESRSTCLKTND            EDKSFPIVTEKMQGKPVCSKKNKKPQKSLTAKYQPKYRHIKPVSRNSRNSKQNRVI            YKPIVEKENNCHSAENNSNAPRVLSQKIKPQVTLQGGAAFFVRKKSSLRKSSLENEP            SLGRTQKSKSEVIEDSDVETVSEKKTAFTRQVPKCLVLEEKLGKIGLLSASSKNKEKLIK            DSSDDRVSSEKHKVDKNEAFSSDSLGENKTISPSTVYPIFSASSVNSKRSLGEEQ            FSVGSVNFMKQTNIQKNTNTRDTSKTKDQLIIDAGQKHFQATVCKSCGMIYTASNP            EDEMQHVVQHHHRFLEGIKYVGWKKERVVAEFWDGKIVLVLPDPSFAIKKVEDVQE            LVDNELGFQQVVPKCPNIKITFLFISDEKRVVGLIAEPIKQAFRVLSEPIGPESPSST            ECPRAWQCSDVPEPAVCGISRIWVFRLLKRRKRIARRLVDTLRNCFMFGCFLSTDEIA</p>

Tel: 1-631-559-9269 1-516-512-3133

Email: [info@creative-biomart.com](mailto:info@creative-biomart.com) Fax: 1-631-938-8127

45-1 Ramsey Road, Shirley, NY 11967, USA



FSDPTPDGKLFATKYCNTPNFLVYNFNS

**Applications**

Enzyme-linked Immunoabsorbent Assay  
Western Blot (Recombinant protein)  
Antibody Production  
Protein Array

**Notes**

Best use within three months from the date of receipt of this protein.

**Storage**

Store at -80 centigrade. Aliquot to avoid repeated freezing and thawing.

**Storage Buffer**

50 mM Tris-HCl, 10 mM reduced Glutathione, pH=8.0 in the elution buffer.

**GENE INFORMATION**

**Gene Name**

ESCO2 establishment of cohesion 1 homolog 2 (S. cerevisiae) [ Homo sapiens ]

**Official Symbol**

ESCO2

**Synonyms**

ESCO2; establishment of cohesion 1 homolog 2 (S. cerevisiae); RBS, Roberts syndrome; N-acetyltransferase ESCO2; EFO2; ECO1 homolog 2; RBS; 2410004I17Rik;

**Gene ID**

157570

**mRNA Refseq**

NM\_001017420

**Protein Refseq**

NP\_001017420

**MIM**

609353

Tel: 1-631-559-9269 1-516-512-3133

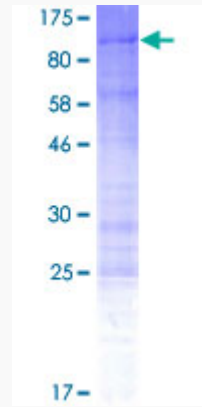
Email: [info@creative-biomart.com](mailto:info@creative-biomart.com) Fax: 1-631-938-8127

45-1 Ramsey Road, Shirley, NY 11967, USA


UniProt ID

Q56NI9

Quality Control  
Testing



12.5% SDS-PAGE Stained with Coomassie Blue.

 Tel: 1-631-559-9269 1-516-512-3133

 Email: [info@creative-biomart.com](mailto:info@creative-biomart.com)  Fax: 1-631-938-8127

 45-1 Ramsey Road, Shirley, NY 11967, USA