

Recombinant Human ESD Protein, GST-tagged

Cat. No. ESD-3498H Lot. No. (See product label)

SPECIFICATION

Product Overview	Human ESD full-length ORF (AAH01169, 1 a.a. - 282 a.a.) recombinant protein with GST-tag at N-terminal.
Species	Human
Source	Wheat Germ
Description	This gene encodes a serine hydrolase that belongs to the esterase D family. The encoded enzyme is active toward numerous substrates including O-acetylated sialic acids, and it may be involved in the recycling of sialic acids. This gene is used as a genetic marker for retinoblastoma and Wilson's disease. [provided by RefSeq, Feb 2009]
Molecular Mass	56.65 kDa
AA Sequence	MALKQISSNKCFGGLQKVFHDSVELNCKMKFAVYLPPKAETGKCPALYWLSGLTC TEQNFISKSGYHQSAEHGLVVIAPDTSRGCNIKGEDESWDFGTGAGFYVDATED PWKTNYRMYSYVTEELPQLINANFPVDPQRMSIFGHSMGGHGALICALKNPGKYKS VSAFAPICNPVLCPWGKKAFSGYLGTDQSKWKAYDATHLVKSYPGSQLDILIDQGKD DQFLLDGQLLPDNFIAACTEKKIPVVFRLQEDYDHSYYFIATFITDHIRHHAKYLNA
Applications	Enzyme-linked Immunoabsorbent Assay Western Blot (Recombinant protein) Antibody Production Protein Array

 Tel: 1-631-559-9269 1-516-512-3133

 Email: info@creative-biomart.com  Fax: 1-631-938-8127

 45-1 Ramsey Road, Shirley, NY 11967, USA

Notes	Best use within three months from the date of receipt of this protein.
Storage	Store at -80 centigrade. Aliquot to avoid repeated freezing and thawing.
Storage Buffer	50 mM Tris-HCl, 10 mM reduced Glutathione, pH=8.0 in the elution buffer.

GENE INFORMATION

Gene Name	ESD esterase D [Homo sapiens]
Official Symbol	ESD
Synonyms	ESD; esterase D; esterase D/formylglutathione hydrolase; S-formylglutathione hydrolase; S formylglutathione hydrolase; esterase 10; methylumbelliferyl-acetate deacetylase; FGH; FLJ11763;
Gene ID	2098
mRNA Refseq	NM_001984
Protein Refseq	NP_001975
MIM	133280
UniProt ID	P10768

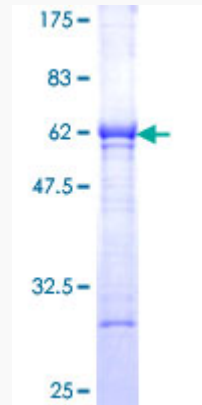
 Tel: 1-631-559-9269 1-516-512-3133

 Email: info@creative-biomart.com  Fax: 1-631-938-8127

 45-1 Ramsey Road, Shirley, NY 11967, USA



**Quality Control
Testing**



12.5% SDS-PAGE Stained with Coomassie Blue.

Tel: 1-631-559-9269 1-516-512-3133

Email: info@creative-biomart.com Fax: 1-631-938-8127

45-1 Ramsey Road, Shirley, NY 11967, USA