

Recombinant Human ESM1 Protein, GST-tagged

Cat. No. ESM1-3500H Lot. No. (See product label)

SPECIFICATION

Product Overview	Human ESM1 full-length ORF (NP_008967.1, 1 a.a. - 184 a.a.) recombinant protein with GST-tag at N-terminal.
Species	Human
Source	Wheat Germ
Description	This gene encodes a secreted protein which is mainly expressed in the endothelial cells in human lung and kidney tissues. The expression of this gene is regulated by cytokines, suggesting that it may play a role in endothelium-dependent pathological disorders. The transcript contains multiple polyadenylation and mRNA instability signals. Two transcript variants encoding different isoforms have been found for this gene. [provided by RefSeq, Oct 2008]
Molecular Mass	46.5 kDa
AA Sequence	MKSVLLLTLLVPAHLVAAWSNNYAVDCPQHCDSSSECKSSPRCKRTVLDDCGCCR VCAAGRGETCYRTVSGMDGMKCGPLRCQPSNGEDPFGEEFGICKDCPYGTFGM DCRETCNCQSGICDRGTGKCLKFPPFQYSVTKSSNRFVSLTEHDMASGDGNIVREE VVKENAAGSPVMRKWLNPR
Applications	Enzyme-linked Immunoabsorbent Assay Western Blot (Recombinant protein) Antibody Production Protein Array

 Tel: 1-631-559-9269 1-516-512-3133

 Email: info@creative-biomart.com  Fax: 1-631-938-8127

 45-1 Ramsey Road, Shirley, NY 11967, USA

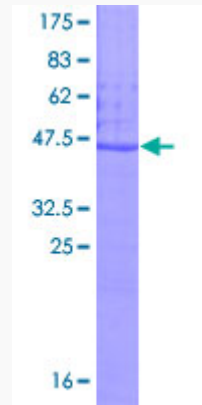
Notes	Best use within three months from the date of receipt of this protein.
Storage	Store at -80 centigrade. Aliquot to avoid repeated freezing and thawing.
Storage Buffer	50 mM Tris-HCl, 10 mM reduced Glutathione, pH=8.0 in the elution buffer.
GENE INFORMATION	
Gene Name	ESM1 endothelial cell-specific molecule 1 [Homo sapiens]
Official Symbol	ESM1
Synonyms	ESM1; endothelial cell-specific molecule 1; ESM-1; endocan;
Gene ID	11082
mRNA Refseq	NM_001135604
Protein Refseq	NP_001129076
MIM	601521
UniProt ID	Q9NQ30

 Tel: 1-631-559-9269 1-516-512-3133

 Email: info@creative-biomart.com  Fax: 1-631-938-8127

 45-1 Ramsey Road, Shirley, NY 11967, USA

**Quality Control
Testing**



12.5% SDS-PAGE Stained with Coomassie Blue.

 Tel: 1-631-559-9269 1-516-512-3133

 Email: info@creative-biomart.com  Fax: 1-631-938-8127

 45-1 Ramsey Road, Shirley, NY 11967, USA