

Recombinant Human Estrogen Receptor 1, His-tagged

Cat. No. ESR1-01H Lot. No. (See product label)

SPECIFICATION

Product Overview	Recombinant Human Estrogen Receptor 1(NP_000116.2), fused to His-tag, was expressed in E. coli.
Species	Human
Source	E.coli
ProteinLength	1-249 aa
Description	<p>This gene encodes an estrogen receptor and ligand-activated transcription factor. The canonical protein contains an N-terminal ligand-independent transactivation domain, a central DNA binding domain, a hinge domain, and a C-terminal ligand-dependent transactivation domain. The protein localizes to the nucleus where it may form either a homodimer or a heterodimer with estrogen receptor 2. The protein encoded by this gene regulates the transcription of many estrogen-inducible genes that play a role in growth, metabolism, sexual development, gestation, and other reproductive functions and is expressed in many non-reproductive tissues. The receptor encoded by this gene plays a key role in breast cancer, endometrial cancer, and osteoporosis. This gene is reported to have dozens of transcript variants due to the use of alternate promoters and alternative splicing, however, the full-length nature of many of these variants remain uncertain.</p>
Form	20 mM Tris-HCl, 150 mM NaCl, pH 8.0
Molecular Mass	The protein has a calculated MW of 27.3 kDa.

 Tel: 1-631-559-9269 1-516-512-3133

 Email: info@creative-biomart.com  Fax: 1-631-938-8127

 45-1 Ramsey Road, Shirley, NY 11967, USA

AA Sequence	MTMTLHTKASGMALLHQIQGNELEPLNRPQLKIPLERPLGEVYLDSSKPAVYNYPEG AAYEFNAAAAANAQVYGQTGLPYGPGSEAAAFGSNGLGGFPPLNSVSPSPLMLLHP PPQLSPFLQPHGQQVPYYLENESGYTVREAGPPAFYRPNSDNRRQGGRRERLAST NDKGSMAAMESAKETRYCAVCNDYASGYHYGVWSCEGCKAFFKRSIQGHNDYMCPL ATNQCTIDKNRRKSCQACRLRKCYEVG
--------------------	---

Storage	Store it under sterile conditions at -20 to -80°C. It is recommended that the protein be aliquoted for optimal storage. Avoid repeated freeze-thaw cycles.
----------------	--

Concentration	0.13 mg/ml
----------------------	------------

GENE INFORMATION

Gene Name	ESR1 estrogen receptor 1 [Homo sapiens (human)]
------------------	---

Official Symbol	ESR1
------------------------	------

Synonyms	ER; ESR; Era; ESRA; ESTRR; NR3A1
-----------------	----------------------------------

Gene ID	2099
----------------	------

mRNA Refseq	NM_000125.4
--------------------	-------------

Protein Refseq	NP_000116.2
-----------------------	-------------

MIM	133430
------------	--------

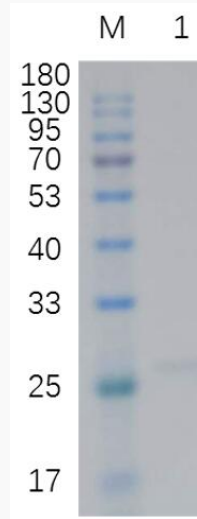
UniProt ID	P03372
-------------------	--------

 Tel: 1-631-559-9269 1-516-512-3133

 Email: info@creative-biomart.com  Fax: 1-631-938-8127

 45-1 Ramsey Road, Shirley, NY 11967, USA

SDS-PAGE of ESR1-01H



 Tel: 1-631-559-9269 1-516-512-3133

 Email: info@creative-biomart.com  Fax: 1-631-938-8127

 45-1 Ramsey Road, Shirley, NY 11967, USA