

## Recombinant Human ESR1 Protein, His-tagged

Cat. No. ESR1-04H Lot. No. (See product label)

### SPECIFICATION

<b>Product Overview</b>	Recombinant Human ESR1 Protein, fused to His-tag, was expressed in E. coli.
<b>Species</b>	Human
<b>Source</b>	E.coli
<b>Description</b>	<p>This gene encodes an estrogen receptor and ligand-activated transcription factor. The canonical protein contains an N-terminal ligand-independent transactivation domain, a central DNA binding domain, a hinge domain, and a C-terminal ligand-dependent transactivation domain. The protein localizes to the nucleus where it may form either a homodimer or a heterodimer with estrogen receptor 2. The protein encoded by this gene regulates the transcription of many estrogen-inducible genes that play a role in growth, metabolism, sexual development, gestation, and other reproductive functions and is expressed in many non-reproductive tissues. The receptor encoded by this gene plays a key role in breast cancer, endometrial cancer, and osteoporosis. This gene is reported to have dozens of transcript variants due to the use of alternate promoters and alternative splicing, however, the full-length nature of many of these variants remain uncertain.</p>
<b>Form</b>	Supplied as a 0.2 µm filtered solution in PBS, pH8.0.
<b>Molecular Mass</b>	~10KDa
<b>AA Sequence</b>	MGSSHHHHHSSGLVPRGSHMCAVCNDYASGYHYGVWSCEGCKAFFKRSIQGHN DYMCPATNQCTIDKNRRKSCQACRLRKCYEVGMLHHHHHH

 Tel: 1-631-559-9269 1-516-512-3133

 Email: [info@creative-biomart.com](mailto:info@creative-biomart.com)  Fax: 1-631-938-8127

 45-1 Ramsey Road, Shirley, NY 11967, USA



<b>Purity</b>	> 90%
<b>Storage</b>	Store it under sterile conditions at -20 to -80 centigrade. It is recommended that the protein be aliquoted for optimal storage. Avoid repeated freeze-thaw cycles.
<b>Concentration</b>	0.03mg/mL

## GENE INFORMATION

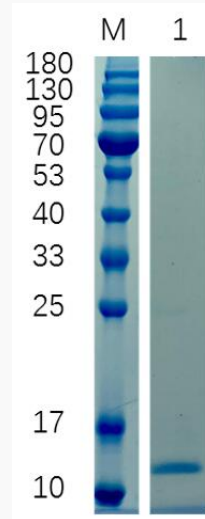
<b>Gene Name</b>	ESR1 estrogen receptor 1 [ Homo sapiens (human) ]
<b>Official Symbol</b>	ESR1
<b>Synonyms</b>	ER; ESR; Era; ESRA; ESTRR; NR3A1
<b>Gene ID</b>	2099
<b>mRNA Refseq</b>	NM_000125
<b>Protein Refseq</b>	NP_000116
<b>MIM</b>	133430
<b>UniProt ID</b>	P03372

Tel: 1-631-559-9269 1-516-512-3133

Email: [info@creative-biomart.com](mailto:info@creative-biomart.com) Fax: 1-631-938-8127

45-1 Ramsey Road, Shirley, NY 11967, USA

**SDS-PAGE**



12% reducing SDS-PAGE analysis of purified ESR1 185-250 (approximately 3 mg protein loaded)

 Tel: 1-631-559-9269 1-516-512-3133

 Email: [info@creative-biomart.com](mailto:info@creative-biomart.com)  Fax: 1-631-938-8127

 45-1 Ramsey Road, Shirley, NY 11967, USA