

Recombinant Human Estrogen Receptor 1

Cat. No. ESR1-116H Lot. No. (See product label)

SPECIFICATION

Product Overview	Recombinant Human Estrogen Receptor protein expressed in <i>E. Coli</i> encodes 1-300 amino acids and has a molecular mass of 59 kDa.
Species	Human
Source	E.coli
Protein Length	1-300 a.a.
Description	The ER gene consists of more than 140kb of genomic DNA divided into 8 exons, being translated into a protein with six functionally discrete domains, labeled A through F. The ER is an important regulator of growth and differentiation in the mammary gland. Presence of ER in breast tumors indicates an increased likelihood of response to anti-estrogen (e.g. tamoxifen) therapy.
Formulation	2g/20µl Recombinant Human ER α protein at 100g/ml in 50mM Tris-Acetate, pH7.5, 1mM EDTA and 20% Glycerol.
Application	•ELISA •Inhibition Assays •Western Blotting.
Characterization	On SDS-PAGE comassie blue stained gel, the purified recombinant protein shows a band at 59 kDa.
Storage & Stability	Store vial at -20°C to -80°C. When stored at the recommended temperature, this protein is stable for 12 months.

 Tel: 1-631-559-9269 1-516-512-3133

 Email: info@creative-biomart.com  Fax: 1-631-938-8127

 45-1 Ramsey Road, Shirley, NY 11967, USA

GENE INFORMATION

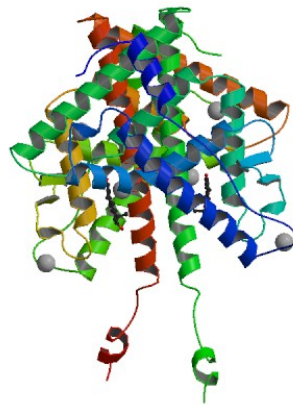
Gene Name	ESR1 estrogen receptor 1 [Homo sapiens]
Synonyms	ESR1; estrogen receptor 1; ER; ESR; Era; ESRA; NR3A1; DKFZp686N23123; Estrogen receptor; ER-alpha; Nuclear receptor subfamily 3 group A member 1
Gene ID	2099
mRNA Refseq	NM_000125
Protein Refseq	NP_000116
UniProt ID	P03372
Chromosome Location	6q24-q27
MIM	133430
Function	estrogen receptor activity; estrogen response element binding; hormone binding; metal ion binding; nitric-oxide synthase regulator activity; protein N-terminus binding; sequence-specific DNA binding; steroid binding; transcription factor activity; zinc ion binding

 Tel: 1-631-559-9269 1-516-512-3133

 Email: info@creative-biomart.com  Fax: 1-631-938-8127

 45-1 Ramsey Road, Shirley, NY 11967, USA

PDB rendering based
on 1a52.



 Tel: 1-631-559-9269 1-516-512-3133

 Email: info@creative-biomart.com  Fax: 1-631-938-8127

 45-1 Ramsey Road, Shirley, NY 11967, USA