

# Recombinant Human ESR1 Protein, Full Length, N-FLAG tagged

Cat. No. ESR1-13HFL Lot. No. (See product label)

## SPECIFICATION

**Product Overview** Recombinant Estrogen Receptor-alpha protein was expressed in baculovirus system as the full length protein (accession number NP\_000116.2) with an N-terminal FLAG tag.

**Species** Human

**Source** Insect cells

**ProteinLength** Full Length

**Description** This gene encodes an estrogen receptor and ligand-activated transcription factor. The canonical protein contains an N-terminal ligand-independent transactivation domain, a central DNA binding domain, a hinge domain, and a C-terminal ligand-dependent transactivation domain. The protein localizes to the nucleus where it may form either a homodimer or a heterodimer with estrogen receptor 2. The protein encoded by this gene regulates the transcription of many estrogen-inducible genes that play a role in growth, metabolism, sexual development, gestation, and other reproductive functions and is expressed in many non-reproductive tissues. The receptor encoded by this gene plays a key role in breast cancer, endometrial cancer, and osteoporosis. This gene is reported to have dozens of transcript variants due to the use of alternate promoters and alternative splicing, however, the full-length nature of many of these variants remain uncertain.

 Tel: 1-631-559-9269 1-516-512-3133

 Email: [info@creative-biomart.com](mailto:info@creative-biomart.com)  Fax: 1-631-938-8127

 45-1 Ramsey Road, Shirley, NY 11967, USA

<b>Molecular Mass</b>	67.5 kDa
<b>Purity</b>	> 80%
<b>Storage</b>	Recombinant proteins in solution are temperature sensitive and must be stored at -80 centigrade to prevent degradation. Avoid repeated freeze/thaw cycles and keep on ice when not in storage.
<b>Storage Buffer</b>	Recombinant Estrogen Receptor-alpha protein is supplied in 25 mM HEPES-NaOH pH 7.5, 300 mM NaCl, 10% glycerol, 0.04% Triton X-100, and 0.5 mM TCEP.
<b>GENE INFORMATION</b>	
<b>Gene Name</b>	ESR1 estrogen receptor 1 [ Homo sapiens (human) ]
<b>Official Symbol</b>	ESR1
<b>Synonyms</b>	ESR1; estrogen receptor 1; ER; ESR; Era; ESRA; ESTRR; NR3A1; estrogen receptor; E2 receptor alpha; ER-alpha; estradiol receptor; estrogen nuclear receptor alpha; estrogen receptor alpha E1-E2-1-2; estrogen receptor alpha E1-N2-E2-1-2; nuclear receptor subfamily 3 group A member 1; oestrogen receptor alpha
<b>Gene ID</b>	2099
<b>mRNA Refseq</b>	NM_000125
<b>Protein Refseq</b>	NP_000116
<b>MIM</b>	133430
<b>UniProt ID</b>	P03372

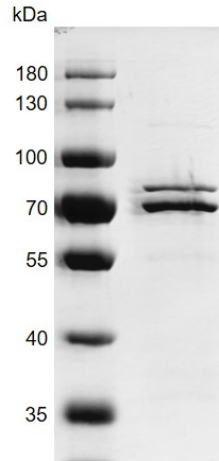
 Tel: 1-631-559-9269 1-516-512-3133

 Email: [info@creative-biomart.com](mailto:info@creative-biomart.com)  Fax: 1-631-938-8127

 45-1 Ramsey Road, Shirley, NY 11967, USA

**SDS-PAGE**

**Estrogen Receptor-alpha**



 Tel: 1-631-559-9269 1-516-512-3133

 Email: [info@creative-biomart.com](mailto:info@creative-biomart.com)  Fax: 1-631-938-8127

 45-1 Ramsey Road, Shirley, NY 11967, USA