

Recombinant Human ESR1 Protein

Cat. No. ESR1-14H Lot. No. (See product label)

SPECIFICATION

Product Overview	Recombinant Human ESR1 Protein was expressed in E. coli.
Species	Human
Source	E.coli
Description	<p>This gene encodes an estrogen receptor and ligand-activated transcription factor. The canonical protein contains an N-terminal ligand-independent transactivation domain, a central DNA binding domain, a hinge domain, and a C-terminal ligand-dependent transactivation domain. The protein localizes to the nucleus where it may form either a homodimer or a heterodimer with estrogen receptor 2. The protein encoded by this gene regulates the transcription of many estrogen-inducible genes that play a role in growth, metabolism, sexual development, gestation, and other reproductive functions and is expressed in many non-reproductive tissues. The receptor encoded by this gene plays a key role in breast cancer, endometrial cancer, and osteoporosis. This gene is reported to have dozens of transcript variants due to the use of alternate promoters and alternative splicing, however, the full-length nature of many of these variants remain uncertain.</p>
Form	Liquid. In 20 mM Tris-HCl, 150 mM NaCl, pH 8.0.
Molecular Mass	~27.3 kDa
AA Sequence	MTMTLHTKASGMALLHQIQGNELEPLNRPQLKIPLERPLGEVYLDSSKPAVYNYPEG AAYEFNAAAAANAQVYGQTGLPYGPGSEAAAFGSNGLGGFPPLNSVSPSPLMLLHP

 Tel: 1-631-559-9269 1-516-512-3133

 Email: info@creative-biomart.com  Fax: 1-631-938-8127

 45-1 Ramsey Road, Shirley, NY 11967, USA

PPQLSPFLQPHGQQVPYYLENEPSGYTVREAGPPAFYRPNSDNRRQGGRERLAST
 NDKGSMAMESAKETRYCAVCNDYASGYHYGVWSCEGCKAFFKRSIQGHNDYMCP
 ATNQCTIDKNRRKSCQACRLRKCYEVG

Purity >85%

Storage Short Term Storage at 4 centigrade, Long Term, please prepare aliquots with 20% glycerol and store at -20 to -80 centigrade. Avoid freeze/thaw cycles.

Concentration 0.15 mg/ml

Official Full Name Estrogen receptor 1

GENE INFORMATION

Gene Name [ESR1 estrogen receptor 1 \[Homo sapiens \(human\) \]](#)

Official Symbol [ESR1](#)

Synonyms ER; ESR; Era; ESRA; ESTRR; NR3A1

Gene ID [2099](#)

mRNA Refseq [NM_000125](#)

Protein Refseq [NP_000116](#)

MIM [133430](#)

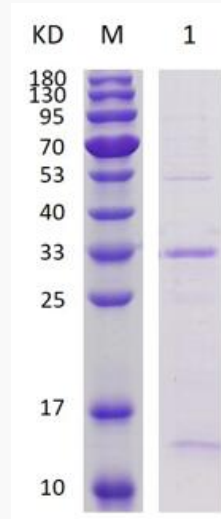
UniProt ID [P03372](#)

 Tel: 1-631-559-9269 1-516-512-3133

 Email: info@creative-biomart.com  Fax: 1-631-938-8127

 45-1 Ramsey Road, Shirley, NY 11967, USA

SDS-PAGE



15% SDS-PAGE analysis profiles of purified Human ESR1 (CBB stained).

 Tel: 1-631-559-9269 1-516-512-3133

 Email: info@creative-biomart.com  Fax: 1-631-938-8127

 45-1 Ramsey Road, Shirley, NY 11967, USA