

Recombinant Human ESR1 Protein, Myc/DDK-tagged, C13 and N15-labeled

Cat. No. ESR1-2416H **Lot. No.** (See product label)

SPECIFICATION

Product Overview	ESR1 MS Standard C13 and N15-labeled recombinant protein (NP_001116212) with a C-terminal MYC/DDK tag, was expressed in HEK293 cells.
Species	Human
Source	HEK293
Description	This gene encodes an estrogen receptor, a ligand-activated transcription factor composed of several domains important for hormone binding, DNA binding, and activation of transcription. The protein localizes to the nucleus where it may form a homodimer or a heterodimer with estrogen receptor 2. Estrogen and its receptors are essential for sexual development and reproductive function, but also play a role in other tissues such as bone. Estrogen receptors are also involved in pathological processes including breast cancer, endometrial cancer, and osteoporosis. Alternative promoter usage and alternative splicing result in dozens of transcript variants, but the full-length nature of many of these variants has not been determined.
Molecular Mass	66 kDa
AA Sequence	MTMTLHTKASGMALLHQIQGNELEPLNRPQLKIPLERPLGEVYLDSSKPAVYNYPEG AAYEFNAAAAANAQVYGQTGLPYGPGSEAAAFGSNGLGGFPPLNSVSPSPLMLLHP PPQLSPFLQPHGQQVPYYLENEPSGYTVREAGPPAFYRPNSDNRRQGGRRERLAST NDKGSMAAMESAKETRYCAVCNDYASGYHYGVWSCEGCKAFFKRSIQGHNDYMCP

 Tel: 1-631-559-9269 1-516-512-3133

 Email: info@creative-biomart.com  Fax: 1-631-938-8127

 45-1 Ramsey Road, Shirley, NY 11967, USA

ATNQCTIDKNRRKSCQACRLRKCYEVGMMKGGIRKDRRGGRMLKHKRQRDDGEG
 RGEVGSAGDMRAANLWPSPLMIKRSKKNLALSALTADQMVSALLDAEPPILYSEYDP
 TRPFSEASMMGLLTNLADRELVHMINWAKRVPGFVDLTLHDQVHLLCAWLEILMIG
 LVWRSMEHPGKLLFAPNLLDRNQGKCVEGMVEIFDMLLATSSRFRMMNLQGEEF
 VCLKSIILLNSGVYTFLSSTLKSLEEKDHIHRVLDKITDTLIHLMKAGLTLQQQHQLA
 QLLLILSHIRHMSNKGMEHLYSMKCKNVVPLYDLLLEMLDAHRLHAPTSRGGASVEE
 TDQSHLATAGSTSSHSLQKYYITGEAEGFPATVTRTRPLEQKLISEEDLAANDILDYK
 DDDDKV

Purity > 80% as determined by SDS-PAGE and Coomassie blue staining

Stability Stable for 3 months from receipt of products under proper storage and handling conditions.

Storage Store at -80 centigrade. Avoid repeated freeze-thaw cycles.

Concentration 50 µg/mL as determined by BCA

Storage Buffer 100 mM glycine, 25 mM Tris-HCl, pH 7.3.

GENE INFORMATION

Gene Name ESR1 estrogen receptor 1 [Homo sapiens (human)]

Official Symbol ESR1

Synonyms ESR1; estrogen receptor 1; ER; ESR; Era; ESRA; ESTRR; NR3A1; estrogen receptor; E2 receptor alpha; ER-alpha; estradiol receptor; estrogen nuclear receptor alpha; estrogen receptor alpha E1-E2-1-2; estrogen receptor alpha E1-N2-E2-1-2; nuclear receptor subfamily 3 group A member 1; oestrogen receptor alpha

 Tel: 1-631-559-9269 1-516-512-3133

 Email: info@creative-biomart.com  Fax: 1-631-938-8127

 45-1 Ramsey Road, Shirley, NY 11967, USA

Gene ID 2099

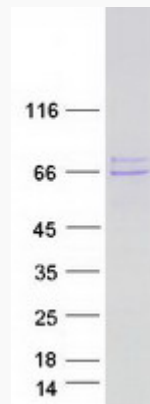
mRNA Refseq NM_001122740

Protein Refseq NP_001116212

MIM 133430

UniProt ID P03372

SDS-PAGE



Tel: 1-631-559-9269 1-516-512-3133

Email: info@creative-biomart.com Fax: 1-631-938-8127

45-1 Ramsey Road, Shirley, NY 11967, USA