

## Recombinant Human ESR1 Protein, GST-tagged

**Cat. No.** ESR1-3504H    **Lot. No.** (See product label)

### SPECIFICATION

<b>Product Overview</b>	Human ESR1 full-length ORF ( AAI28574.1, 1 a.a. - 595 a.a.) recombinant protein with GST-tag at N-terminal.
<b>Species</b>	Human
<b>Source</b>	Wheat Germ
<b>Description</b>	This gene encodes an estrogen receptor, a ligand-activated transcription factor composed of several domains important for hormone binding, DNA binding, and activation of transcription. The protein localizes to the nucleus where it may form a homodimer or a heterodimer with estrogen receptor 2. Estrogen and its receptors are essential for sexual development and reproductive function, but also play a role in other tissues such as bone. Estrogen receptors are also involved in pathological processes including breast cancer, endometrial cancer, and osteoporosis. Alternative promoter usage and alternative splicing result in dozens of transcript variants, but the full-length nature of many of these variants has not been determined. [provided by RefSeq, Mar 2014]
<b>Molecular Mass</b>	92.6 kDa
<b>AA Sequence</b>	MTMTLHTKASGMALLHQIQGNELEPLNRPQLKIPLERPLGEVYLDSSKPAVYNYPEG AAYEFNAAAAANAQVYGQTGLPYGPGSEAAAFGSNGLGGFPPLNSVSPSPLMLLHP PPQLSPFLQPHGQQVPYYLENEPSGYTVREAGPPAFYRPNSDNRRQGGRERLAST NDKGSMAVESAKETRYCAVCNDYASGYHYGVWSCEGCKAFFKRSIQGHNDYMCP

 Tel: 1-631-559-9269    1-516-512-3133

 Email: [info@creative-biomart.com](mailto:info@creative-biomart.com)     Fax: 1-631-938-8127

 45-1 Ramsey Road, Shirley, NY 11967, USA

ATNQCTIDKNRRKSCQACRLRKCYEVGMMKGGIRKDRRGGRMLKHKRQRDDGEG  
 RGEVGSAGDMRAANLWPSPLMIKRSKKNLALSALTADQMVSALLDAEPPILYSEYDP  
 TRPFSEASMMGLLTNLADRELVHMINWAKRVPGFVDLTLHDQVHLLCAWLEILMIG  
 LVWRSMEHDPGKLLFAPNLLDRNQGKCVEGMVEIFDMLLATSSRFRMMNLQGEEF  
 VCLKSIILLNSGVYTFLSSTLKSLEEKDHIHRVLDKITDTLIHLMKAGLTLQQQHQLA  
 QLLLILSHIRHMSNKGMEHLYSMKCKNVVPLYDLLLEMLDAHRLHAPTSRGGASVEE  
 TDQSHLATAGSTSSHSLQKYYITGEAEGFPATV

**Applications**  
 Enzyme-linked Immunoabsorbent Assay  
 Western Blot (Recombinant protein)  
 Antibody Production  
 Protein Array

**Notes** Best use within three months from the date of receipt of this protein.

**Storage** Store at -80 centigrade. Aliquot to avoid repeated freezing and thawing.

**Storage Buffer** 50 mM Tris-HCl, 10 mM reduced Glutathione, pH=8.0 in the elution buffer.

## GENE INFORMATION

**Gene Name** [ESR1 estrogen receptor 1 \[ Homo sapiens \]](#)

**Official Symbol** [ESR1](#)

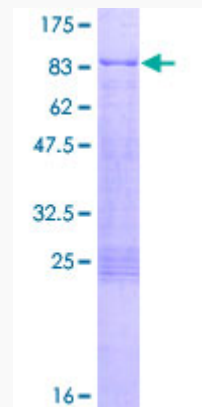
**Synonyms** ESR1; estrogen receptor 1; ESR; estrogen receptor; Era; NR3A1; ER-alpha; estradiol receptor; estrogen nuclear receptor alpha; estrogen receptor alpha delta 4 +49 isoform; nuclear receptor subfamily 3 group A member 1; estrogen receptor alpha 3\*,4,5,6,7\*/822 isoform; estrogen receptor alpha delta 4\*,5,6,7\*/654 isoform; estrogen receptor alpha delta 4\*,5,6,7,8\*/901 isoform; estrogen receptor alpha delta 3\*,4,5,6,7\*/819-2 isoform; estrogen receptor alpha delta 3\*,4,5,6,7\*,8\*/941 isoform;

 Tel: 1-631-559-9269 1-516-512-3133


 Email: [info@creative-biomart.com](mailto:info@creative-biomart.com)  Fax: 1-631-938-8127

 45-1 Ramsey Road, Shirley, NY 11967, USA

ER; ESRA; DKFZp686N23123;

**Gene ID** 2099**mRNA Refseq** NM\_000125**Protein Refseq** NP\_000116**MIM** 133430**UniProt ID** P03372**Quality Control  
Testing**

12.5% SDS-PAGE Stained with Coomassie Blue.

 Tel: 1-631-559-9269 1-516-512-3133 Email: [info@creative-biomart.com](mailto:info@creative-biomart.com)  Fax: 1-631-938-8127 45-1 Ramsey Road, Shirley, NY 11967, USA