

Active Recombinant Full Length Human ESR1 Protein, C-Flag-tagged

Cat. No. ESR1-38HFL Lot. No. (See product label)

SPECIFICATION

Product Overview

Recombinant Full Length Human ESR1 Protein, fused to Flag-tag at C-terminus, was expressed in Mammalian cells.

Species

Human

Source

Mammalian Cells

Description

This gene encodes an estrogen receptor and ligand-activated transcription factor. The canonical protein contains an N-terminal ligand-independent transactivation domain, a central DNA binding domain, a hinge domain, and a C-terminal ligand-dependent transactivation domain. The protein localizes to the nucleus where it may form either a homodimer or a heterodimer with estrogen receptor 2. The protein encoded by this gene regulates the transcription of many estrogen-inducible genes that play a role in growth, metabolism, sexual development, gestation, and other reproductive functions and is expressed in many non-reproductive tissues. The receptor encoded by this gene plays a key role in breast cancer, endometrial cancer, and osteoporosis. This gene is reported to have dozens of transcript variants due to the use of alternate promoters and alternative splicing, however, the full-length nature of many of these variants remain uncertain.

Form

25 mM Tris HCl, pH 7.3, 100 mM glycine, 10% glycerol.

Bio-activity

Binding assay

 Tel: 1-631-559-9269 1-516-512-3133

 Email: info@creative-biomart.com  Fax: 1-631-938-8127

 45-1 Ramsey Road, Shirley, NY 11967, USA

Molecular Mass	66 kDa
AA Sequence	<p>MTMTLHTKASGMALLHQIQGNELEPLNRPQLKIPLERPLGEVYLDSSKPAVYNYPEG AAYEFNAAAAANA QVYGQTGLPYGPGSEAAAFGSNGLGGFPPLNSVSPSPLMLLH PPPQLSPFLQPHGQQVPYYLENEPSGYT VREAGPPAFYRPNSDNRRQGGRELA STNDKGSMAKESAKETRYCAVCNDYASGYHYGVWSCEGCKAFFK RSIQGHNDYM CPATNQCTIDKNRRKSCQACRLRKYEVGMMKGGIRKDRRGG RMLKHKRQRDDG EGRGEV GSAGDMRAANLWPSPLMIKRSKKNLALS LTADQMVSALLDAEPPILYSE YDPTRPFSEASMMGLLTNLA DRELVHMINWAKRVPGFVDLTLHDQVHLLECAWLEI LMIGLVWRSMEHPGKLLFAPNLLLDRNQGKCV EG MVEIFDMLLATSSRFRMMNLQ GEEFVCLKSIILLNSGVYTFLSSTLKSLEEKDHIHRVLDKITDTLIHLM AKAGLTQQQ HQRLAQLLLILSHIRHMSNKGMEHLYSMKCKNVVPLYDLLLEMLDAHRLHAPTSRGG ASV EETDQSHLATAGSTSSHSLQKYYITGEAEGFPATVTRTRPLEQKLISEEDLAANDILD YKDDDDKV</p>
Purity	> 80% as determined by SDS-PAGE and Coomassie blue staining.
Stability	Stable for 12 months from the date of receipt of the product under proper storage and handling conditions. Avoid repeated freeze-thaw cycles.
Storage	Store at -80 centigrade.
Concentration	>50 ug/mL as determined by microplate BCA method.
Preparation	Recombinant protein was captured through anti-DDK affinity column followed by conventional chromatography steps.
Protein Families	Druggable Genome, Nuclear Hormone Receptor, Transcription Factors

 Tel: 1-631-559-9269 1-516-512-3133

 Email: info@creative-biomart.com  Fax: 1-631-938-8127

 45-1 Ramsey Road, Shirley, NY 11967, USA

Full Length Full L.

GENE INFORMATION

Gene Name ESR1 estrogen receptor 1 [Homo sapiens (human)]

Official Symbol ESR1

Synonyms ER; ESR; Era; ESRA; ESTRR; NR3A1

Gene ID 2099

mRNA Refseq NM_000125.4

Protein Refseq NP_000116.2

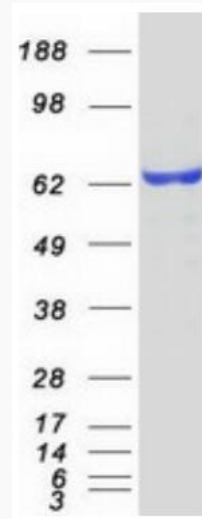
MIM 133430

UniProt ID P03372

 Tel: 1-631-559-9269 1-516-512-3133

 Email: info@creative-biomart.com  Fax: 1-631-938-8127

 45-1 Ramsey Road, Shirley, NY 11967, USA



Coomassie blue staining of purified ESR1 protein.

 Tel: 1-631-559-9269 1-516-512-3133

 Email: info@creative-biomart.com  Fax: 1-631-938-8127

 45-1 Ramsey Road, Shirley, NY 11967, USA