

Recombinant Human ESR1 protein, His-Myc-tagged

Cat. No. ESR1-5322H Lot. No. (See product label)

SPECIFICATION

Product Overview	Recombinant Human ESR1 protein(P03372)(315-551aa), fused with C-terminal His and Myc tag, was expressed in Yeast.
Species	Human
Source	Yeast
ProteinLength	315-551aa
Form	If the delivery form is liquid, the default storage buffer is Tris/PBS-based buffer, 5%-50% glycerol. If the delivery form is lyophilized powder, the buffer before lyophilization is Tris/PBS-based buffer, 6% Trehalose, pH 8.0.
Molecular Mass	31.5 kDa
Purity	Greater than 90% as determined by SDS-PAGE.
Storage	Store at -20°C/-80°C upon receipt, aliquoting is necessary for mutiple use. Avoid repeated freeze-thaw cycles.
Reconstitution	We recommend that this vial be briefly centrifuged prior to opening to bring the contents to the bottom. Please reconstitute protein in deionized sterile water to a concentration of 0.1-1.0 mg/mL. We recommend to add 5-50% of glycerol (final concentration) and aliquot for long-term storage at -20°C/-80°C.

 Tel: 1-631-559-9269 1-516-512-3133

 Email: info@creative-biomart.com  Fax: 1-631-938-8127

 45-1 Ramsey Road, Shirley, NY 11967, USA

AA Sequence

MVSALLDAEPPILYSEYDPTRPFSEASMMGLLTNLADRELVHMINWAKRVPGFVDLT
 LHDQVHLLLECAWLEILMIGLVWRSMEHPGKLLFAPNLLDRNQKCVVEGMVEIFDML
 LATSSRFRMMNLQGEEFVCLKSIILLNSGVYTFLSSTLKSLEEKDHIHRVLDKITDTLIH
 LMAKAGLTLQQQHQRLAQLLLILSHIRHMSNKGMEHLYSMKCKNVVPLYDLLLEMLD
 AURLHA

GENE INFORMATION
Gene Name

[ESR1 estrogen receptor 1 \[Homo sapiens \]](#)

Official Symbol

[ESR1](#)

Synonyms

ESR1; estrogen receptor 1; ESR; estrogen receptor; Era; NR3A1; ER-alpha; estradiol receptor; estrogen nuclear receptor alpha; estrogen receptor alpha delta 4 +49 isoform; nuclear receptor subfamily 3 group A member 1; estrogen receptor alpha 3*,4,5,6,7*/822 isoform; estrogen receptor alpha delta 4*,5,6,7*/654 isoform; estrogen receptor alpha delta 4*,5,6,7,8*/901 isoform; estrogen receptor alpha delta 3*,4,5,6,7*/819-2 isoform; estrogen receptor alpha delta 3*,4,5,6,7*,8*/941 isoform; ER; ESRA; DKFZp686N23123;

Gene ID

[2099](#)

mRNA Refseq

[NM_000125](#)

Protein Refseq

[NP_000116](#)

UniProt ID

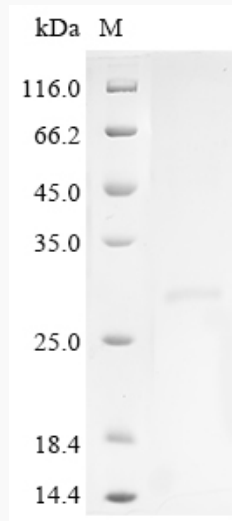
[P03372](#)

 Tel: 1-631-559-9269 1-516-512-3133

 Email: info@creative-biomart.com  Fax: 1-631-938-8127

 45-1 Ramsey Road, Shirley, NY 11967, USA

SDS-PAGE



 Tel: 1-631-559-9269 1-516-512-3133

 Email: info@creative-biomart.com  Fax: 1-631-938-8127

 45-1 Ramsey Road, Shirley, NY 11967, USA