

Recombinant Human ESR2 Protein (2-530 aa), His-tagged

Cat. No. ESR2-1391H Lot. No. (See product label)

SPECIFICATION

Product Overview	Recombinant Human ESR2 Protein (2-530 aa) is produced by Yeast expression system. This protein is fused with a 6xHis tag at the N-terminal. Protein Description: Partial.
Species	Human
Source	Yeast
ProteinLength	2-530 aa
Description	Nuclear hormone receptor. Binds estrogens with an affinity similar to that of ESR1, and activates expression of reporter genes containing estrogen response elements (ERE) in an estrogen-dependent manner. Isoform beta-cx lacks ligand binding ability and has no or only very low ere binding activity resulting in the loss of ligand-dependent transactivation ability. DNA-binding by ESR1 and ESR2 is rapidly lost at 37 degrees Celsius in the absence of ligand while in the presence of 17 beta-estradiol and 4-hydroxy-tamoxifen loss in DNA-binding at elevated temperature is more gradual.
Form	Tris-based buffer, 50% glycerol
Molecular Mass	61.1 kDa
AA Sequence	DIKNSPSSLNSPSSYNCSQSILPLEHGSIYIPSSYVDSHHEYPAMTFYSPAVMNYSIP SNVTNLEGGPGRQTTSPNVLWPTPGHLSPLVVHRQLSHLYAEPQKSPWCEARSLE HTLPVNRETLKRKVSNGRCASPVTGPGSKRDAHFCAVCSASYSGYHYGVWSCEG

 Tel: 1-631-559-9269 1-516-512-3133

 Email: info@creative-biomart.com  Fax: 1-631-938-8127

 45-1 Ramsey Road, Shirley, NY 11967, USA

CKAFFKRSIQGHNDYICPATNQCTIDKNRRKSCQACRLRKCYEVGMVKCGSRRERC
 GYRLVRRQRSADQLHCAGKAKRSGGHAPRVRELLLDALSPEQLVLTLLLEAEPHV
 LISRPSAPFTEASMMMSLTKLADKELVHMISWAKKIPGFVELSLFDQVRLLDESCWME
 VLMMGLMWRSIDHPGKLIFAPDLVDRDEGKCVEGILEIFDMLLATTSRFRELKLQHK
 EYLCVKAMILLNSSMYPLVTATQDADSSRKLHLLNAVTDALVWVIAKSGISSQQQS
 MRLANLLMLLSHVRHASNKGMEHLLNMKCKNVVVPVYDLLLEMLNAHVLRGCKSSIT
 GSECSPAEDSKSKEGSQNPQSQ

Purity > 90% as determined by SDS-PAGE.

Notes Repeated freezing and thawing is not recommended. Store working aliquots at 4 centigrade for up to one week.

Storage The shelf life is related to many factors, storage state, buffer ingredients, storage temperature and the stability of the protein itself. Generally, the shelf life of liquid form is 6 months at -20 centigrade/-80 centigrade. The shelf life of lyophilized form is 12 months at -20 centigrade/-80 centigrade.

Concentration A hardcopy of COA with reconstitution instruction is sent along with the products.

GENE INFORMATION

Gene Name [ESR2 estrogen receptor 2 \(ER beta\) \[Homo sapiens \]](#)

Official Symbol [ESR2](#)

Synonyms ESR2; Erb; NR3A2; ESRB; ESTRB; ER-BETA; ESR-BETA;

Gene ID [2100](#)

mRNA Refseq [NM_001040275](#)

 Tel: 1-631-559-9269 1-516-512-3133

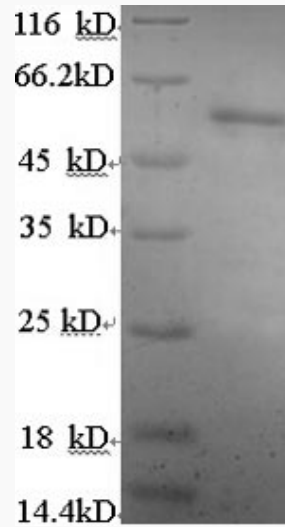
 Email: info@creative-biomart.com  Fax: 1-631-938-8127

 45-1 Ramsey Road, Shirley, NY 11967, USA

Protein Refseq NP_001035365

MIM 601663

UniProt ID Q92731



(Tris-Glycine gel) Discontinuous SDS-PAGE (reduced) with 5% enrichment gel and 15% separation gel.

Tel: 1-631-559-9269 1-516-512-3133

Email: info@creative-biomart.com Fax: 1-631-938-8127

45-1 Ramsey Road, Shirley, NY 11967, USA