

## Recombinant Human ESR2 Protein (Met1-Ala323), N-His tagged

Cat. No. ESR2-2670H Lot. No. (See product label)

### SPECIFICATION

<b>Product Overview</b>	Recombinant human ESR2 (Met1-Ala323) protein fused with the N-terminus His tag was expressed in E. coli.
<b>Species</b>	Human
<b>Source</b>	E.coli
<b>ProteinLength</b>	Met1-Ala323
<b>Molecular Mass</b>	35.53 kDa
<b>Purity</b>	>90 % as determined by SDS-PAGE.
<b>Notes</b>	For research use only.
<b>Storage</b>	Use a manual defrost freezer and avoid repeated freeze thaw cycles. Store at 2 to 8 centigrade for one week. Store at -20 to -80 centigrade for twelve months from the date of receipt.
<b>Storage Buffer</b>	Supplied as solution form in PBS or lyophilized from PBS.
<b>Reconstitution</b>	Reconstitute in sterile water for a stock solution.
<b>Shipping</b>	In general, proteins are provided as lyophilized powder/frozen liquid. They are

 Tel: 1-631-559-9269 1-516-512-3133

 Email: [info@creative-biomart.com](mailto:info@creative-biomart.com)  Fax: 1-631-938-8127

 45-1 Ramsey Road, Shirley, NY 11967, USA

shipped out with dry ice/blue ice unless customers require otherwise.

## GENE INFORMATION

**Gene Name** ESR2 estrogen receptor 2 (ER beta) [ Homo sapiens (human) ]

**Official Symbol** ESR2

**Synonyms** ESR2; estrogen receptor 2 (ER beta); estrogen receptor beta; Erb; NR3A2; estrogen receptor beta 4; estrogen nuclear receptor beta variant a; estrogen nuclear receptor beta variant b; nuclear receptor subfamily 3 group A member 2; ESRB; ESTRB; ER-BETA; ESR-BETA;

**Gene ID** 2100

**mRNA Refseq** NM\_001040275

**Protein Refseq** NP\_001035365

**MIM** 601663

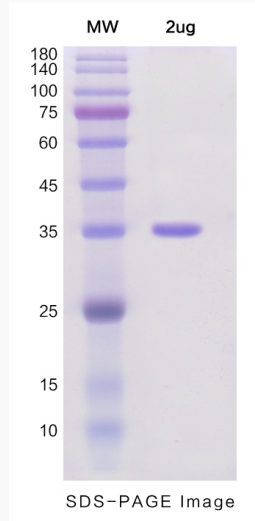
**UniProt ID** Q92731

 Tel: 1-631-559-9269 1-516-512-3133

 Email: [info@creative-biomart.com](mailto:info@creative-biomart.com)  Fax: 1-631-938-8127

 45-1 Ramsey Road, Shirley, NY 11967, USA

**SDS-PAGE**



 Tel: 1-631-559-9269 1-516-512-3133

 Email: [info@creative-biomart.com](mailto:info@creative-biomart.com)  Fax: 1-631-938-8127

 45-1 Ramsey Road, Shirley, NY 11967, USA