

Active Recombinant Full Length Human ESR2 Protein, C-DDK-tagged

Cat. No. ESR2-310HFL Lot. No. (See product label)

SPECIFICATION

Product Overview	Recombinant Full Length Human ESR2 Protein, fused to DDK-tag at C-terminus, was expressed in Sf9.
Species	Human
Source	Mammalian Cells
Description	<p>This gene encodes a member of the family of estrogen receptors and superfamily of nuclear receptor transcription factors. The gene product contains an N-terminal DNA binding domain and C-terminal ligand binding domain and is localized to the nucleus, cytoplasm, and mitochondria. Upon binding to 17beta-estradiol or related ligands, the encoded protein forms homo- or hetero-dimers that interact with specific DNA sequences to activate transcription. Some isoforms dominantly inhibit the activity of other estrogen receptor family members. Several alternatively spliced transcript variants of this gene have been described, but the full-length nature of some of these variants has not been fully characterized.</p>
Form	50mM Tris-HCl pH8.0, 100mM glycine, 10% glycerol.
Bio-activity	Binding assay
Molecular Mass	59 kDa
AA Sequence	A DNA sequence from TrueORF clone, RC218519, encoding human full-length

 Tel: 1-631-559-9269 1-516-512-3133

 Email: info@creative-biomart.com  Fax: 1-631-938-8127

 45-1 Ramsey Road, Shirley, NY 11967, USA

	ESR2.
Purity	> 80% as determined by SDS-PAGE and Coomassie blue staining.
Stability	Stable for 12 months from the date of receipt of the product under proper storage and handling conditions. Avoid repeated freeze-thaw cycles.
Storage	Store at -80 centigrade.
Concentration	>50 ug/mL as determined by microplate BCA method.
Protein Families	Druggable Genome, Nuclear Hormone Receptor, Transcription Factors
Full Length	Full L.

GENE INFORMATION

Gene Name	ESR2 estrogen receptor 2 [Homo sapiens (human)]
Official Symbol	ESR2
Synonyms	Erb; ESRB; ODG8; ESTRB; NR3A2; ER-BETA; ESR-BETA
Gene ID	2100
mRNA Refseq	NM_001437.3
Protein Refseq	NP_001428.1
MIM	601663

 Tel: 1-631-559-9269 1-516-512-3133

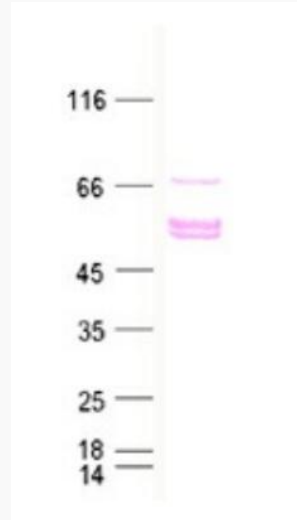
 Email: info@creative-biomart.com  Fax: 1-631-938-8127

 45-1 Ramsey Road, Shirley, NY 11967, USA

UniProt ID

Q92731

SDS-PAGE



 Tel: 1-631-559-9269 1-516-512-3133

 Email: info@creative-biomart.com  Fax: 1-631-938-8127

 45-1 Ramsey Road, Shirley, NY 11967, USA