

Recombinant Human ESR2 Protein, His-tagged

Cat. No. ESR2-659H Lot. No. (See product label)

SPECIFICATION

Product Overview	Recombinant Human ESR2(Cys149~Gly213) fused with His tag and linked with LEHHHHHH at N-terminal was expressed in E. coli.
Species	Human
Source	E.coli
ProteinLength	Cys149~Gly213
Description	<p>This gene encodes a member of the family of estrogen receptors and superfamily of nuclear receptor transcription factors. The gene product contains an N-terminal DNA binding domain and C-terminal ligand binding domain and is localized to the nucleus, cytoplasm, and mitochondria. Upon binding to 17beta-estradiol or related ligands, the encoded protein forms homo- or hetero-dimers that interact with specific DNA sequences to activate transcription. Some isoforms dominantly inhibit the activity of other estrogen receptor family members. Several alternatively spliced transcript variants of this gene have been described, but the full-length nature of some of these variants has not been fully characterized.</p>
Form	20mM Tris, 150mM NaCl,pH8.0, containing 1mM EDTA, 1mM DTT, 0.01% SKL, 5% Trehalose and Proclin300.
Molecular Mass	9.7kd
Identity	Reconstitute in 20mM Tris, 150mM NaCl (pH8.0) to a concentration of 0.1-1.0 mg/mL.

 Tel: 1-631-559-9269 1-516-512-3133

 Email: info@creative-biomart.com  Fax: 1-631-938-8127

 45-1 Ramsey Road, Shirley, NY 11967, USA

	Do not vortex.
Endotoxin	<1.0EU per 1g (determined by the LAL method)
Purity	> 95%
Applications	Positive Control; Immunogen; SDS-PAGE; WB. If bio-activity of the protein is needed, please check active protein
Stability	The thermal stability is described by the loss rate. The loss rate was determined by accelerated thermal degradation test, that is, incubate the protein at 37 centigrade for 48h, and no obvious degradation and precipitation were observed. The loss rate is less than 5% within the expiration date under appropriate storage condition.
Storage	Avoid repeated freeze/thaw cycles. Store at 2-8 centigrade for one month. Aliquot and store at -80 centigrade for 12 months.
Reconstitution	Reconstitute in PBS or others

GENE INFORMATION

Gene Name	ESR2 estrogen receptor 2 (ER beta) [Homo sapiens]
Official Symbol	ESR2
Synonyms	ESR2; estrogen receptor 2 (ER beta); estrogen receptor beta; Erb; NR3A2; estrogen receptor beta 4; estrogen nuclear receptor beta variant a; estrogen nuclear receptor beta variant b; nuclear receptor subfamily 3 group A member 2; ESRB; ESTRB; ER-BETA; ESR-BETA;
Gene ID	2100

 Tel: 1-631-559-9269 1-516-512-3133

 Email: info@creative-biomart.com  Fax: 1-631-938-8127

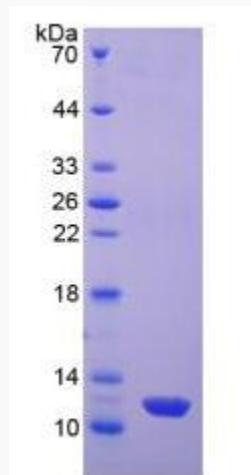
 45-1 Ramsey Road, Shirley, NY 11967, USA

mRNA Refseq [NM_001040275](#)

Protein Refseq [NP_001035365](#)

MIM [601663](#)

UniProt ID [Q92731](#)



 Tel: 1-631-559-9269 1-516-512-3133

 Email: info@creative-biomart.com  Fax: 1-631-938-8127

 45-1 Ramsey Road, Shirley, NY 11967, USA