

Recombinant Human ESRRA Protein (1-423 aa), GST-tagged

Cat. No. ESRRA-2117H Lot. No. (See product label)

SPECIFICATION

Product Overview	Recombinant Human ESRRA Protein (1-423 aa) is produced by E. coli expression system. This protein is fused with a GST tag at the N-terminal. Research Area: Epigenetics and Nuclear Signaling. Protein Description: Full Length.
Species	Human
Source	E.coli
ProteinLength	1-423 aa
Description	Binds to an ERR-alpha response element (ERRE) containing a single consensus half-site, 5'-TNAAGGTCA-3'. Can bind to the medium-chain acyl coenzyme A dehydrogenase (MCAD) response element NRRE-1 and may act as an important regulator of MCAD promoter. Binds to the C1 region of the lactoferrin gene promoter. Requires dimerization and the coactivator, PGC-1A, for full activity. The ERRalpha/PGC1alpha complex is a regulator of energy metabolism. Induces the expression of PERM1 in the skeletal muscle.
Form	Tris-based buffer,50% glycerol
Molecular Mass	72.5 kDa
AA Sequence	MSSQVVGIEPLYIKAEPASPDSPKGSSETETETPPVALAPGPAPTRCLPGHKEEEDGE GAGPGEQGGGKLVLSLSPKRLCLVCGDVASGYHYGVASCEACKAFFKRTIQGSIEY SCPASNECEITKRRRKACQACRFTKCLRVMGMLKEGVRLDRVRGGRQKYKRRPEVD

 Tel: 1-631-559-9269 1-516-512-3133

 Email: info@creative-biomart.com  Fax: 1-631-938-8127

 45-1 Ramsey Road, Shirley, NY 11967, USA

PLPFFGPFPAAGPLAVAGGPRKTAAPVNALVSHLLVVEPEKLYAMPDPAGPDGHLPA
 VATLCDLFDREIVVTISWAKSIPGFSSLSLSDQMSVLQSVWMEVLVLGVAQRSLPLQ
 DELAFAEDLVLDEEGARAAGLGELGAALLQLVRRQLALRLEREEYVLLKALALANS
 SVHIEDAEAVEQLREALHEALLEYEAGRAGPGGGAERRRAGRLLLLLPLLRQTAGKV
 LAHFYGVKLEGKVPMHKLFLEMLEAMMD

Purity > 90% as determined by SDS-PAGE.

Notes Repeated freezing and thawing is not recommended. Store working aliquots at 4 centigrade for up to one week.

Storage The shelf life is related to many factors, storage state, buffer ingredients, storage temperature and the stability of the protein itself. Generally, the shelf life of liquid form is 6 months at -20 centigrade/-80 centigrade. The shelf life of lyophilized form is 12 months at -20 centigrade/-80 centigrade.

Concentration A hardcopy of COA will be sent along with the products. Please refer to it for detailed information.

GENE INFORMATION

Gene Name [ESRRA estrogen-related receptor alpha \[Homo sapiens \]](#)

Official Symbol [ESRRA](#)

Synonyms ESRRA; ESRL1; ERR1; ERRa; ERRalpha; NR3B1; ERR-alpha;

Gene ID [2101](#)

mRNA Refseq [NM_004451](#)

 Tel: 1-631-559-9269 1-516-512-3133

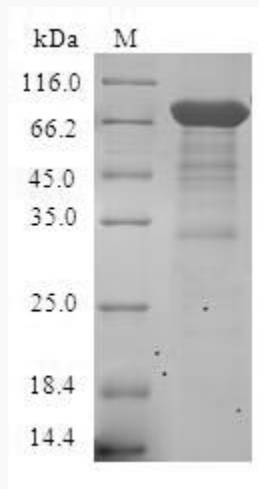
 Email: info@creative-biomart.com  Fax: 1-631-938-8127

 45-1 Ramsey Road, Shirley, NY 11967, USA

Protein Refseq NP_004442

MIM 601998

UniProt ID P11474



(Tris-Glycine gel) Discontinuous SDS-PAGE (reduced) with 5% enrichment gel and 15% separation gel.

 Tel: 1-631-559-9269 1-516-512-3133

 Email: info@creative-biomart.com  Fax: 1-631-938-8127

 45-1 Ramsey Road, Shirley, NY 11967, USA