

Recombinant Human ESRRA Protein, GST-tagged

Cat. No. ESRRA-3508H Lot. No. (See product label)

SPECIFICATION

Product Overview	Human ESRRA full-length ORF (NP_004442.3, 1 a.a. - 423 a.a.) recombinant protein with GST-tag at N-terminal.
Species	Human
Source	Wheat Germ
Description	<p>The protein encoded by this gene is a nuclear receptor that is closely related to the estrogen receptor. This protein acts as a site-specific transcription regulator and has been also shown to interact with estrogen and the transcription factor TFIIB by direct protein-protein contact. The binding and regulatory activities of this protein have been demonstrated in the regulation of a variety of genes including lactoferrin, osteopontin, medium-chain acyl coenzyme A dehydrogenase (MCAD) and thyroid hormone receptor genes. A processed pseudogene of ESRRA is located on chromosome 13q12.1. Alternatively spliced transcript variants have been found for this gene. [provided by RefSeq, Sep 2013]</p>
Molecular Mass	71.9 kDa
AA Sequence	<p>MSSQVVGIEPLYIKAEPASPDSPKGSSETETETPPVALAPGPAPTRCLPGHKEEEDGE GAGPGEQGGGKLVLSLPRKRLCLVCGDVASGYHYGVASCEACKAFFKRTIQGSIEY SCPASNECEITKRRRKACQACRFTKCLRVMGMLKEGVRLDRVRGGRQKYKRRPEVD PLPFPGPFPAGPLAVAGGPRKTAAPVNALVSHLLVVEPEKLYAMPDPAGPDGHLPA VATLCDLFDREIVVTISWAKSIPGFSSLSLSDQMSVLQSVWMEVLVLGVAQRSLPLQ</p>

 Tel: 1-631-559-9269 1-516-512-3133

 Email: info@creative-biomart.com  Fax: 1-631-938-8127

 45-1 Ramsey Road, Shirley, NY 11967, USA

DELAFAEDLVLDEEGARAAGLGELGAALLQLVRRRLQALRLEREEYVLLKALALANS
 SVHIEDAEAVEQLREALHEALLEYEAGRAGPGGGAERRRAGRLLLLLPLLRQTAGKV
 LAHFYGVKLEGKVPMHKLFLFLEMLEAMMD

Applications
 Enzyme-linked Immunoabsorbent Assay
 Western Blot (Recombinant protein)
 Antibody Production
 Protein Array

Notes Best use within three months from the date of receipt of this protein.

Storage Store at -80 centigrade. Aliquot to avoid repeated freezing and thawing.

Storage Buffer 50 mM Tris-HCl, 10 mM reduced Glutathione, pH=8.0 in the elution buffer.

GENE INFORMATION

Gene Name [ESRRA estrogen-related receptor alpha \[Homo sapiens \]](#)

Official Symbol [ESRRA](#)

Synonyms ESRRA; estrogen-related receptor alpha; ESRL1; steroid hormone receptor ERR1; ERR1; ERRa; ERRalpha; NR3B1; ERR-alpha; estrogen receptor-like 1; estrogen-related nuclear receptor alpha; nuclear receptor subfamily 3 group B member 1;

Gene ID [2101](#)

mRNA Refseq [NM_004451](#)

Protein Refseq [NP_004442](#)

 Tel: 1-631-559-9269 1-516-512-3133

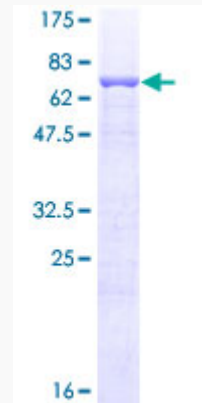
 Email: info@creative-biomart.com  Fax: 1-631-938-8127

 45-1 Ramsey Road, Shirley, NY 11967, USA

MIM 601998

UniProt ID P11474

**Quality Control
Testing**



12.5% SDS-PAGE Stained with Coomassie Blue.

 Tel: 1-631-559-9269 1-516-512-3133

 Email: info@creative-biomart.com  Fax: 1-631-938-8127

 45-1 Ramsey Road, Shirley, NY 11967, USA